

Monthly Report on Short-term Transactions of Electricity in India

April 2024



Economics Division
Central Electricity Regulatory Commission
6th, 7th & 8th Floors, Tower B, World Trade Centre
Nauroji Nagar, New Delhi- 110029



Contents

S.No.	Contents	Page No
	Contents	i
	List of Tables	ii
	List of Figures	iii
	Abbreviations	iv
1	Introduction	1
2	Volume of Short-term Transactions of Electricity and DSM	1
3	Price of Short-term Transactions of Electricity and DSM Charges	4
3.1	<i>Price of electricity transacted through Traders</i>	4
3.2	<i>Price of electricity transacted through Power Exchanges</i>	4
3.3	<i>DSM Charges</i>	4
4	Trading Margin	5
5	Volume of Short-term Transactions of Electricity (Regional Entity-wise)	5
6	Congestion on Inter-State Transmission Corridor for Day-Ahead Market and Real-Time Market on Power Exchanges	6
7	Volume and Price of Renewable Energy Certificates (RECs)	7
8	Inferences	8

S.No.	List of Tables	Page No.
Table-1	Volume of Short-term Transactions of Electricity and DSM (All India)	11
Table-2	Percentage Share of Electricity Transacted by Trading Licensees	13
Table-3	Price of Electricity Transacted through Traders	14
Table-4	Price of Electricity Transacted through Traders (Time-wise)	14
Table-5	Price of Electricity Transacted in Day Ahead Market	14
Table-6	Price of Electricity Transacted in Green Day Ahead Market	14
Table-7	Price of Electricity Transacted in High Price Day Ahead Market	14
Table-8	Price of Electricity Transacted in Real Time Market	14
Table-9	Volume and Price of Electricity in Term Ahead Market of IEX	14
Table-10	Volume and Price of Electricity in Term Ahead Market of PXIL	14
Table-11	Volume and Price of Electricity in Term Ahead Market of HPX	15
Table-12	Volume and Price of Electricity in Green Term Ahead Market of IEX	15
Table-13	Volume and Price of Electricity in Green Term Ahead Market of PXIL	15
Table-14	Volume and Price of Electricity in Green Term Ahead Market of HPX	15
Table-15	Volume and Price of Electricity in High Price Term Ahead Market of IEX	15
Table-16	Volume and Price of Electricity in High Price Term Ahead Market of PXIL	15
Table-17	Volume and Price of Electricity in High Price Term Ahead Market of HPX	15
Table-18	Volume of Electricity Sold in Day Ahead Market through Power Exchanges	17
Table-19	Volume of Electricity Purchased in Day Ahead Market through Power Exchanges	19
Table-20	Volume of Electricity Sold in Green Day Ahead Market through Power Exchanges	20
Table-21	Volume of Electricity Purchased in Green Day Ahead Market through Power Exchanges	21
Table-22	Volume of Electricity Sold in High Price Day Ahead Market through Power Exchanges	22
Table-23	Volume of Electricity Purchased in High Price Day Ahead Market through Power Exchanges	22
Table-24	Volume of Electricity Sold in Real Time Market through Power Exchanges	23
Table-25	Volume of Electricity Purchased in Real Time Market through Power Exchanges	25
Table-26	Total Volume of Net Transactions through Power Exchanges (Regional Entity-wise)	26
Table-27	Details of Congestion in Power Exchanges	28
Table-28	Volume of Transactions through Power Exchanges (Day-wise)	29
Table-29(a)	Price of Day Ahead Transactions of Electricity (Day-Wise)	30
Table-29(b)	Price of Green Day Ahead Transactions of Electricity (Day-Wise)	31
Table-29(c)	Price of Real Time Transactions of Electricity (Day-Wise)	32
Table-29(d)	Price of High Price Day Ahead Transactions of Electricity (Day-Wise)	33
Table-30	Volume of Transactions through Power Exchanges (Regional Entity-wise)	34
Table-31	Volume and Charges under DSM (Day wise)	37
Table-32	Volume of Electricity Under drawal/ Over Injection (Exported) under DSM	38
Table-33	Volume of Electricity Over drawal/ Under Injection (Imported) under DSM	42
Table-34	Volume and Price of Renewable Energy Certificates (RECs) Transacted through Power Exchanges and through Traders (Bilateral)	46
Table-35(a)	Volume and Price of Cross Border Trade through Day Ahead Market at IEX	46
Table-35(b)	Volume and Price of Cross Border Trade through Real Time Market at IEX	46

S. No.	List of Figures	Page No.
Figure-1	Volume of various kinds of Electricity Transactions in Total Electricity Generation	11
Figure-2	Volume of Short-term Transactions of Electricity and DSM Volume	11
Figure-3	Volume transacted in different markets segments on Power Exchanges	12
Figure-4	Volume of transactions on Power Exchange and DSM Volume (Day-wise)	12
Figure-5	Percentage Share of Electricity Transacted by Trading Licensees	13
Figure-6	Weighted Average Price of Short-term Transactions of Electricity	16
Figure-7	Weighted Average Price of Short-term Transactions of Electricity (Day-wise)	16

Abbreviations

Abbreviation	Expanded Version
ABSP_ANTP	Acme Bhiwadi Solar Power Private Limited, Anantpur
ACBIL	ACB (India) Limited
ACP	Area Clearing Price
ACV	Area Clearing Volume
ACME_SLR	ACME Solar Power Project
ACME_RUMS	Acme Rewa Ultra Mega Solar Project
ADANI_4RE	Adani Renewable Energy Holding Four Limited
ADANI GREEN	Adani Green Energy Limited
ADANIHB_SLR	Adani Hybrid Energy Jaisalmer One Limited (Solar)
ADANI_SLR 4	Adani Solar Energy Four Private Limited
ADANIHB_WIND	Adani Hybrid Energy Jaisalmer One Limited (Wind)
ADEPT	Adept Renewable Technologies Private Limited
ADY1_PVGD	Adyah Solar Energy Pvt Ltd., Block 1 Pavagada Solar Park
ADY2_PVGD	Adyah Solar Energy Pvt Ltd., Block 2 Pavagada Solar Park
ADY3_PVGD	Adyah Solar Energy Pvt Ltd., Block 3 Pavagada Solar Park
ADY6_PVGD	Adyah Solar Energy Pvt Ltd., Block 6 Pavagada Solar Park
ADY10_PVGD	Adyah Solar Energy Pvt Ltd., Block 10 Pavagada Solar Park
ADY13_PVGD	Adyah Solar Energy Pvt Ltd., Block 13 Pavagada Solar Park
AGEMPL BHUJ	Adani Green Energy (MP) Ltd.,Bhuj
AHEJOL_S_FTG2	Adani Hybrid Energy Jaisalmer One Limited (SOLAR)
AHEJOL_W_FTG2	Adani Hybrid Energy Jaisalmer One Limited (WIND)
AHEJ2L_SOLAR	Adani Hybrid Energy Jaisalmer Two Limited (Solar)
AHEJ3L_SOLAR	Adani Hybrid Energy Jaisalmer Three Limited (Solar)
AHEJ4L_SOLAR	Adani Hybrid Energy Jaisalmer Four Limited-Hybrid Solar
AHEJ4L_WIND	Adani Hybrid Energy Jaisalmer Four Limited-Hybrid Wind
AHSP_ANTP	Acme Hisar Solar Power Private Limited,Anantpur
AKS_PVGD	ACME Kurukshetra Solar Energy Pvt. Ltd
AKSP_ANTP	Acme Karnal Solar Power Private Limited,Anantpur
ALFANAR_BHUJ	Alfanar Group Wind Project, Bhuj, Gujarat
ALTRA XERGI	Altra Xergi Power Private Limited
AMP_GREEN6	Amp Energy Green Six Private Limited
AMPLUS_AGES	Amplus Ages Private Limited
AMPS Hazira	Arcelor Mittal Nippon Steel, Hazira
APTEL	Appellate Tribunal for Electricity
ARERJL_SLR	Adani Renewable Energy Park Rajasthan Ltd.
ARINSUM_RUMS	Solenergi RewaUltraMega Solar Project
ARS_PVGD	ACME REWARI Solar Power Pvt Ltd.
ARTPP	Adani Power Limited - Raipur TPP
ASEJTL_SLR	Adani Solar Energy Jodhpur Two Ltd.
AVAADA1_PVGD	Avaada Solar Energy Private Ltd., Pavagada Project 1
AVAADA2_PVGD	Avaada Solar Energy Private Ltd., Pavagada Project 2
AVADARJHN_SLR	Avaada Rjhn Private Limited_Solar
AYANA_NPKUNTA	Ayana Power, NP Kunta
AZURE_ANTP	Azure Power,Anantpur
AZURE_PVGD	Azure Power,Pavagada
AZURE_SLR	Azure Power Solar Power Project
AZURE34_SLR	Azure Power 34 Pvt. Ltd. Solar Power Project
AZURE43_SLR	Azure Power Forty Three Private Limited
BALCO	Bharat Aluminum Company Limited
BARC	Bhabha Atomic Research Centre
BASOCHHU HEP	Basochhu Hydropower Plant Bhutan
BBMB	Bhakra Beas Management Board

BETAM_TCN	Betam Wind Energy Private Limited, Tuticorin
BHADRAVATHI HVDC	Bhadravathi High Voltage Direct Current Link
BRBCL	Bhartiya Rail Bijlee Company Limited
CEA	Central Electricity Authority
CERC	Central Electricity Regulatory Commission
CGPL	Coastal Gujarat Power Limited
CHUKHA HEP	Chhukha Hydroelectric Project, Bhutan
CHUZACHEN HEP	Chuzachen Hydro Electric Power Project
CLEAN_SLR	Clean Solar Power Pvt. Ltd
CLEANSPL_SLR	Clean Solar Jodhpur Pvt Ltd
COASTGEN	Coastal Energen Private Limited
DAGACHU	Dagachhu Hydro Power Corporation
DAM	Day Ahead Market
DEVKOOT_SLR	Devkoot Solar Power Plant, NTPC Green Energy Ltd.
DCPP	Donga Mahua Captive Power Plant
DD&DNH	Daman and Diu & Dadar Nagar Haveli
DGEN MEGA POWER	DGEN Mega Power Project
DGPCL Bhutan	Druk Green Power Corporation Ltd., Bhutan
DHARIWAL POWER	Dhariwal Power Station
DIKCHU HEP	Dikchu Hydro-electric Project, Sikkim
DOYANG HEP	DoyangHydro Electric Project
DSM	Deviation Settlement Mechanism
DVC	Damodar Valley Corporation
EDEN_SLR	Eden RE Cite Private limited
EMCO	EMCO Energy Limited
ESPL_RADHANESDA	Electro Solaire Private Limited, Radhanesda
ESSAR POWER	Essar Power Limited
FORTUM1_PVGD	Fortum Finnsurya Energy Private Ltd, Pavagada Project 1
FORTUM2_PVGD	Fortum Finnsurya Energy Private Ltd, Pavagada Project 2
FRV_ANTP	Fotowatio Renewable Ventures, Anantapur
FRV_NPK	Fotowatio Renewable Ventures, NP Kunta
GIPCL_RADHANESDA	Gujarat Industries Power Company Ltd, Radhanesda
GIWEL_BHUJ	Green infra wind energy Limited, Bhuj
GIWEL_TCN	Green Infra Wind Energy Limited,Tuticorin
GMR CHHATTISGARH	GMR Chhattisgarh Energy Limited
GMR KAMALANGA	GMR Kamalanga Energy Ltd.
G-DAM	Green Day Ahead Market
GRIAN	Grian Energy Private Limited
GSECL P-II	GSECL Raghnesda Solar Park (Phase-II)
G-TAM	Green Term Ahead Market
HPX	Hindustan Power Exchange Limited
HP-DAM	High Price Day Ahead Market
HP-TAM	High Price Term Ahead Market
HVDC ALPD	Alipurduar High Voltage Direct Current Link
HVDC CHAMPA	Champa-Kurukshetra High Voltage Direct Current Link
HVDC PUS	PasauliHigh Voltage Direct Current Link
HVDC RAIGARH	Raigarh-Pugalur High Voltage Direct Current Link
IBEUL	Ind Bharat Energy Utkal Limited
IEX	Indian Energy Exchange Limited
IGSTPS	Indira Gandhi Super Thermal Power Station Jhajjar
IL&FS	Infrastructure Leasing & Financial Services Limited
INOX_BHUJ	INOX Wind Limited, Bhuj, Gujarat
J&K	Jammu & Kashmir
JAYPEE NIGRIE	Jaypee Nigrie Super Thermal Power Project

JHABUA POWER MP	Jhabua Thermal Power Project
JINDAL POWER	Jindal Power Limited
JINDAL STAGE-II	Jindal Power Ltd Stage II
JITPL	Jindal India Thermal Power Ltd.
JORETHANG	Jorethang Loop Hydroelectric Power Project
JSW_RENEW_2	JSW Renew Energy Two Limited
KAPP 3&4	Kakrapar Atomic Power Station Unit 3 & 4
KARCHAM WANGTOO	Karcham Wangtoo H.E. Project
KBUNL	Kanti Bijlee Utpadan Nigam Limited
KHURJA STPP	Khurja Super Thermal Power Plant
KORBA WEST POWER	Korba West Power Company Limited
KOTESHWAR	Koteshwar Hydro Power project
KREDL_PVGD	Karnataka Renewable Energy Development Ltd,Pavagada
KSK MAHANADI	KSK Mahanadi Power Ltd
KSMPL_SLR	Kilaj Solar (Maharashtra) Private Limited
KURICHU HEP	Kurichhu Hydro-electric Power Station, Bhutan
LANKO_AMK	LancoAmarkantak Power Private Limited
LANKO BUDHIL	LancoBudhil Hydro Power Private Limited
LANKOKONDAPALLY	Lanco Kondapally Power Private Limited
LOKTAK	Loktak Power Project
MAHINDRA_RUMS	Mahindra Rewa Ultra Mega Solar Project
MAHOBASLR	Mahoba Solar Power Project
MALANA	Malana Hydroelectric Plant
MANGDECHU HEP	Mangdechhu Hydroelectric Project, Mangdechhu River, Bhutan
Maruti Coal	Maruti Clean Coal and Power Limited
MB POWER	MB Power Ltd
MEENAKSHI	Meenakshi Energy Private Limited
MRPL	Mahindra Renewables Private Limited
MSEPL	Masaya Solar Energy Private Limited
MSRPL	Mega Solis Renewables Pvt. Ltd.
MTPS	TATA Power Mundra Thermal Power Station
MTPS II	Muzaffarpur Thermal Power Station – Stage II
MYTRAH_TCN	Mytrah Energy (India) Private Limited,Tuticorin
MU	Million Units
NAPP	Narora Atomic Power Plant
NCR ALLAHABAD	North Central Railway, Allahabad
NEEPCO	North Eastern Electric Power Corporation Limited
NEP	Nepal
NFL	National Fertilisers Limited
NHPC STATIONS	National Hydro Electric Power Corporation Ltd. Stations
NJPC	Nathpa Jhakri Hydroelectric Power Station
NLC	Neyveli Lignite Corporation Limited
NLDC	National Load Dispatch Centre
NOKHRA_STPP	Nokhra Solar Power Plant, NTPC Green Energy Ltd.
NPGC	Nabinagar Power Generating Company (Pvt.) Limited
NREL_DAYAPAR (W)	NREL-Dayapar Wind
NSPCL	NTPC - SAIL Power Company Private Limited
NTECLVallur	NTPC Tamil Nadu Energy Company Limited Vallur
NTPC_ANTP	NTPC Anantapur
NTPC STATIONS	National Thermal Power Corporation Ltd. Stations
NTPL	NLC Tamil Nadu Power Limited
NVVN	NTPC Vidyut Vyapar Nigam Limited
OCF	Order Carry Forward
ONEVOLT	Onevolt Energy Private Limited

ONGC Platana	ONGC Tripura Power Company
OPGC	Odisha Power Generation Corporation
ORANGE_TCN	Orange Renewable Power Pvt. Ltd, Tuticorin
OSTRO	Ostro Energy Private Limited
OTC	Over The Counter
PARAM_PVGD	Parampujya Solar Energy Private Ltd
PARE HEP	Pare hydroelectric project, Arunachal Pradesh
PXIL	Power Exchange India Limited
RAMPUR HEP	Rampur Hydro Electric Power Project
RANGIT HEP	Rangit Hydroelectric power project
RANGANADI HEP	Ranganadi Hydro Electric Power Project, Arunachal Pradesh
RAP-B	Rajasthan Atomic Power Plant-B
RAP-C	Rajasthan Atomic Power Plant-C
RAPP 7&8	Rajasthan Atomic Project 7&8
REC	Renewable Energy Certificate
REGL	Raigarh Energy Generation Limited
RENEW_BHACHAU	ReNew Power Limited, Bhachau
RENEW_BHUJ	ReNew Power Limited, Bhuj
RENEW_PVGD	ReNew Wind Energy (TN2) Private Limited
RENEW_ROSHNI FATEHGARH	Renew Surya Roshni Private Limited-Fatehgarh-III PS
RENEW_SAAVAN	Renew Surya Aayan Private Limited
RENEW_SLR_BKN	Renew Solar Bikaner
RENEW_SOJAS	Renew Surya Ojas Private Limited-Wind
RENEW_SPRATAP	Renew Surya Pratap Private Limited
RENEW_SR_SLR	Renew Surya Ravi Private Limited (Solar)
RENEW_SVIHAAN	Renew Surya Vihaan Private Limited
RENEW_ROSHNI	Renew Surya Roshni Private Limited Koppal PS
RENEWJH_SLR	Renew Solar Energy (Jharkhand Three) Private Limited
RENEWURJA_SLR	ReNew Solar Urja Private Limited
RGPPL_IR	Ratnagiri Gas and Power Private Ltd., supply to Indian Railways
RGPPL_OTHER	Ratnagiri Gas and Power Private Limited
RISING_SLR	Rising Sun Energy Pvt. Ltd.
RLDC	Regional Load Dispatch Centre
RONGNICHU HEP	Rongnichu Hydro Electric Power Project
RPREL	Raipur Energen Limited
RSTPS_FSPP	NTPC Ramagundam STPS- Floating Solar PV Project
RTC	Round The Clock
RTM	Real Time Market
SasanUMPP	Sasan Ultra Mega Power Project
SB_SLR	Soft Bank Solar
SB6_POKARAN	SB Energy Six Private Limited, Pokaran
SBG_CLEANTECH_SLR	SBG Cleantech Ltd
SBG_NPK	SB Energy Solar Private Limited, NP Kunta
SBG_PVGD	SB Energy Solar Private Limited, Pavagada
SBSR_SLR	SBSR Power Cleantech Eleven Private Limited
SEMBCORP	Sembcorp Gayatri Power Ltd
SIMHAPURI	Simhapuri Energy Private Limited
SKS Power	SKS Power Generation Chhattisgarh Limited
SESPL	Srijan Energy Systems Pvt. Ltd.
SINGOLI BHATWARI HEP	Singoli-Bhatwari Hydroelectric Project, Uttarakhand
SKRPL	Sitac Kabini Renewables Pvt. Ltd.
SPRNG_NPKUNTA	Sprng Energy, NP Kunta
SPRING_PUGALUR	Spring Solar Power Private Limited, Pugalur
SUL	Sikkim Urja Limited

TALA HEP	Tala Hydroelectric Project, Bhutan
TASHIDENG HEP	Tashiding Hydro Electric Project, Sikkim
TATA_ANTP	TATA Power Anantapur
TATA_PVGD	Tata Power Renewable Energy Ltd
TATA_SLR	Tata Solar
TAM	Term Ahead Market
TEESTA STG3	Teesta Stage 3 Hydro Power Project
TEHRI	Tehri Hydro Electric Power Project
TESPL	Transition Energy Services Private Limited
THAR1_SLR	Thar Surya Ravi One Pvt Ltd
THERMAL POWERTECH	Thermal Powertech Corporation India Limited
TPREL_RADHANESDA	Tata Power Renewable Energy Limited, Radhanesda
TPSL	TP Saurya Limited
VINDHYACHAL HVDC	Vindhyachal High Voltage Direct Current Link
WA	Weighted Average
YARROW_PVGD	Yarrow Infra Structure Private Ltd

1. Introduction

1.1. A well-functioning electricity market requires an effective market monitoring process. The monthly report on short-term transactions of electricity, published by CERC since 2008 as part of its market monitoring process, provides a snapshot of key aspects of short-term transactions of electricity in India. Here, “short-term transactions of electricity” refers to the contracts of less than one year period for electricity transacted (inter-State) - through Trading Licensees, directly by the Distribution Licensees and on Power Exchanges (Indian Energy Exchange Ltd (IEX), Power Exchange India Ltd (PXIL) and Hindustan Power Exchange Ltd (HPX)). “DSM Volume” includes the volume recorded under Deviation Settlement Mechanism. The main objectives of the report are: (i) to analyse the volume and price of the short-term transactions of electricity; (ii) to assess the competition among the market players; (iii) to analyse the effect of congestion on the volume of electricity transacted through power exchanges; (iv) to provide information on volume and price of Renewable Energy Certificates (RECs) transacted through power exchanges; and (v) to disseminate all other relevant market information. The analysis of short-term transactions of electricity and DSM volume during the month of **April 2024** is presented in the following sections.

2. Volume of Short-term Transactions of Electricity and DSM

2.1. During April 2024, total electricity generation, excluding generation from renewable and captive power plants in India, was 135781.26 MU (Table-1). Of the total electricity generation, 15.68% was transacted through short-term and DSM, comprising of 8.61% through bilateral¹ (through Traders and Term-Ahead contracts on power exchanges, and directly between distribution companies), followed by 5.25% through power exchanges {Day Ahead Market (DAM) (including G-DAM) and Real Time Market (RTM)}, and 1.82% through DSM (Table-1 & Figure-1).

2.2. Of the total short-term transactions and DSM volume (21294.65 MU), 54.89% was transacted through bilateral (i.e. through Traders, Term-Ahead contracts on power exchanges and directly between companies), followed by 33.48% through power exchanges {DAM

¹ *With change in the regime on implementation of GNA Regulations from 1st October 2023, the volume reported here is not strictly comparable to the volumes in previous months. Some discrepancies were identified by CERC in the data provided by NLDC which prompted further validation. The volume herein is computed after verification with the volumes reported by the Trading Licensees and the Power Exchanges, and are subject to further revision. The Commission has directed NLDC, vide letter dated 05.01.2024, to make necessary provisions to differentiate the type of transactions under GNA and T-GNA at the earliest. In the interim, some of the tables in the monthly reports have been temporarily discontinued.*

(including G-DAM & HP-DAM) and RTM}, and 11.63% through DSM (Table-1 & Figure-2). The daily volume of power exchange transactions is shown in Table-28. Figure-4 shows the daily volume trend for power exchange transactions and DSM volume.

2.3. Of the total volume of electricity transacted through power exchanges, 39.07% of the volume was transacted in Term Ahead Market (TAM) (including G-TAM & HP-TAM), followed by 38.42% in DAM (including G-DAM & HP-DAM) and 22.51% in RTM (Figure-3).

2.4. The share of electricity traded by each trading licensee is given in Table-2 & Figure-5 shows the share of top 5 trading licensees. The volume of electricity transacted by the trading licensees includes bilateral transactions and transactions undertaken through power exchanges. There were 59 trading licensees as of April 2024. Of which, 34 trading licensees were engaged in short-term trading. The top 5 trading licensees, namely PTC India Ltd., NTPC Vidyut Vyapar Nigam Ltd., Adani Enterprises Ltd., Tata Power Trading Company (P) Ltd. and Manikaran Power Ltd., had a share of 80.44% in the total volume of electricity traded by all the licensees.

2.5. Herfindahl-Hirschman Index (HHI), a commonly accepted index to calculate market concentration, has been used to measure competition among trading licensees. An increase in the HHI generally indicates a decrease in competition and an increase in market concentration, and vice versa. The HHI below 0.15 indicates non-concentration, HHI between 0.15 and 0.25 indicates moderate concentration, and HHI above 0.25 indicates high concentration. The HHI has been computed based on the volume of electricity traded (inter-State & intra-State) by inter-State trading licensees, and it was 0.1583 for the month of April 2024, which indicates moderate concentration of market power (Table-2).

2.6. The volume of electricity transacted in the DAM of IEX and PXIL was 4131.42 MU and 3.85 MU, respectively, while no electricity was transacted in the DAM of HPX. The volume of total buy bids and sell bids was 7740.63 MU and 8412.71 MU, respectively in IEX, 17.44 MU and 116.49 MU, respectively in PXIL, while the same was 0.10 MU and 72.17 MU, respectively in HPX.

2.7. Of the total volume of electricity transacted in the DAM of IEX, the volume purchased by the neighbouring countries of India was 326.72 MU, while no volume was sold by the neighbouring countries, under the Cross Border Trade of electricity through power exchange

(Table-35(a)). No Cross Border transaction of electricity was undertaken through PXIL and HPX.

2.8. The volume of electricity transacted in the G-DAM of IEX was 360.12 MU, while no electricity was transacted in the G-DAM of PXIL and HPX. The volume of total buy bids and sell bids was 1532.42 MU and 511.65 MU, respectively, in IEX. No bids were received in PXIL and HPX.

2.9. The volume of electricity transacted in the HP-DAM of IEX was 0.10 MU, while no electricity was transacted in the HP-DAM of PXIL and HPX. The volume of total buy bids and sell bids was 0.86 MU and 2494.84 MU, respectively, in IEX. No bids were received in PXIL and HPX.

2.10. The volume of electricity transacted in the RTM of IEX, PXIL and HPX was 2628.56 MU, 2.45 MU and 2.38 MU, respectively. The volume of total buy bids and sell bids was 4605.76 MU and 5323.91 MU, respectively in IEX, 3.59 MU and 4.61 MU, respectively in PXIL, while the same was 2.95 MU and 4.48 MU, respectively in HPX. The variation in the volume of buy bids and sell bids placed through power exchanges shows variation in the demand and supply position.

2.11. Of the total volume of electricity transacted in the RTM of IEX, the volume sold by the neighbouring countries of India was 0.18 MU, while the volume purchased was 17.83 MU, under the Cross Border Trade of electricity through power exchange (Table-35(b)). No Cross Border transaction of electricity was undertaken through PXIL and HPX.

2.12. The volume of electricity transacted in the TAM of IEX, PXIL and HPX was 1276.36 MU, 1852.24 MU and 1029.32 MU, respectively (Table-9, Table-10 & Table-11). The volume of electricity transacted in the Green Term Ahead Market (G-TAM) of IEX, PXIL and HPX was 40.72 MU, 3.47 MU and 100.58 MU, respectively (Table-12, Table-13 & Table-14).

2.13. The volume of electricity transacted in the HP-TAM of IEX, PXIL and HPX was 1.00 MU, 262.40 MU and 6.08 MU, respectively (Table-15, Table-16 & Table-17).

3. Price of Short-term Transactions of Electricity and DSM charges

3.1. **Price of electricity transacted through Traders:** The minimum, maximum and weighted average sale prices for the electricity transacted through traders were ₹4.27/kWh, ₹10.00/kWh and ₹8.24/kWh, respectively (Table-3). The weighted average sale prices were also computed for the electricity transacted during Round the Clock (RTC), Peak and Off-peak periods separately, and the sale prices were ₹8.20/kWh, ₹9.93/kWh and ₹8.78/kWh, respectively (Table-4).

3.2. **Price of electricity transacted through Power Exchanges:** The minimum, maximum and weighted average prices for the electricity transacted in the DAM of IEX were ₹1.71/kWh, ₹10.00/kWh and ₹4.63/kWh, respectively. These prices in the DAM of PXIL were ₹10.00/kWh, ₹10.00/kWh and ₹10.00/kWh respectively (Table-5). The minimum, maximum and weighted average prices for the electricity transacted in the G-DAM of IEX were ₹1.71/kWh, ₹10.00/kWh and ₹4.08/kWh, respectively (Table-6). The minimum, maximum and weighted average prices for the electricity transacted in the HP-DAM of IEX were ₹1.55/kWh, ₹15.00/kWh and ₹3.56/kWh, respectively (Table-7). The minimum, maximum and weighted average prices for the electricity transacted in the RTM of IEX were ₹0.99/kWh, ₹10.00/kWh and ₹4.78/kWh, respectively. These prices in the RTM of PXIL were ₹10.00/kWh, ₹10.00/kWh and ₹10.00/kWh respectively. The minimum, maximum and weighted average prices for the electricity transacted in the RTM of HPX were ₹10.00/kWh, ₹10.00/kWh and ₹10.00/kWh, respectively (Table-8). The weighted average price of electricity transacted in the TAM of IEX, PXIL and HPX was ₹9.41/kWh, ₹9.18/kWh and ₹9.64/kWh, respectively (Table-9, Table-10 and Table-11). The weighted average price of electricity transacted in the G-TAM of IEX, PXIL and HPX was ₹7.22/kWh, ₹6.44/kWh and ₹3.75/kWh, respectively (Table-12, Table-13 and Table-14). The weighted average price of electricity transacted in the HP-TAM of IEX, PXIL and HPX was ₹15.00/kWh, ₹13.71/kWh and ₹15.00/kWh, respectively (Table-15, Table-16 and Table-17). No electricity was transacted in DAM of HPX, G-DAM of PXIL & HPX, and in HP-DAM of PXIL & HPX.

3.3. **DSM Charges:** The minimum, maximum and average charge under DSM was ₹1.71/kWh, ₹10.01/kWh and ₹5.55/kWh, respectively (Table-31).

3.4. The comparison of weighted average prices of electricity transacted through trading licensees and power exchanges (collective transactions) is shown in Figure-6. The daily prices

of electricity transacted through various segments at power exchanges and their comparison are shown in Table-29(a), (b), (c) & (d) and Figure-7. The daily volume and charges under DSM are shown in Table-31.

4. Trading Margin

4.1. As per the CERC (Procedure, Terms and Conditions for grant of trading licence and other related matters) Regulations 2020, the trading licensees are allowed to charge a trading margin of not less than 0 paise/kWh and upto 7 paise/kWh. The weighted average trading margin charged by the trading licensees for bilateral transactions during the month was ₹0.025/kWh.

5. Volume of Short-term Transactions of Electricity (Regional Entity²-Wise)

5.1. Of the total DAM transactions at power exchanges, the top 5 regional entities/states sold 47.28% of the volume, and these were Uttar Pradesh, Haryana, Chhattisgarh, Madhya Pradesh and Delhi. The HHI for sellers in DAM was 0.0702, which indicates non-concentration of market (Table-18). The top 5 regional entities/states purchased 52.17% of the volume, and these were Gujarat, Telangana, Uttarakhand, Maharashtra and Uttar Pradesh. The HHI for buyers in DAM was 0.0820, which indicates non-concentration of market (Table-19).

5.2. Of the total G-DAM transactions at power exchanges, the top 5 regional entities/states sold 43.02% of the volume, and these were TP Saurya Limited, Adani Renewable Energy Holding Four Ltd., Andhra Pradesh, Madhya Pradesh and Adani Green Energy Twenty Five B Limited (Infirma). The HHI for sellers in G-DAM was 0.0585, which indicates non-concentration of market (Table-20). The top 5 regional entities/states purchased 63.64% of the volume, and these were Maharashtra, Tamil Nadu, Damodar Valley Corporation, Arcelor Mittal Nippon Steel Hazira and Delhi. The HHI for buyers in G-DAM was 0.1084, which indicates non-concentration of market (Table-21).

5.3. The total volume of HP-DAM transactions at power exchanges was sold by 3 regional entities/states and these were NTPC Stations (Northern Region), NTPC Stations (Western Region) and Gujarat. The HHI for sellers in HP-DAM was 0.5030, which indicates high concentration of market (Table-22). The total volume of HP-DAM transactions at power

² In case of a State, the entities which are “selling” also include generators connected to State Grid and the entities which are “buying” also include open access consumers.

exchanges was purchased by only 1 regional entities/states and it was West Bengal. The HHI for buyers in HP-DAM was 1.00, which indicates high concentration of market (Table-23).

5.4. Of the total RTM transactions at power exchanges, the top 5 regional entities/states sold 45.43% of the volume, and these were Madhya Pradesh, Uttar Pradesh, Haryana, Chhattisgarh and Bihar. The HHI for sellers in RTM was 0.0557, which indicates non-concentration of market (Table-24). The top 5 regional entities/states purchased 43.57% of the volume, and these were Telangana, Maharashtra, Rajasthan, Uttar Pradesh, and Jammu & Kashmir. The HHI for buyers in RTM was 0.0603, which indicates non-concentration of market (Table-25).

5.5. The total volume of net transactions through power exchanges (Regional entity-wise), is shown in Table-26 & 30. The top 5 electricity selling regional entities/states of power exchange transactions were Uttar Pradesh, Haryana, Madhya Pradesh, Chhattisgarh and Delhi. The top 5 electricity purchasing regional entities/states of power exchange transactions were Telangana, Gujarat, Maharashtra, Uttarakhand and Tamil Nadu.

5.6. Of the total under-drawal/ over-injection volume under DSM in April 2024, the top 5 regional entities/states accounted for 21.11% of the volume, and these were Tamil Nadu, Maharashtra, Uttar Pradesh, NTPC Stations (Western Region) and Madhya Pradesh (Table-32). The top 5 regional entities/states under DSM accounted for 24.37% of the total over-drawal/ under-injection volume, and these were NTPC Stations (Northern Region), NTPC Stations (Eastern Region), Uttar Pradesh, NTPC Stations (Western Region) and NTPC Stations (Southern Region) (Table-33).

6. Congestion³ on Inter-State Transmission Corridor for Day-Ahead Market and Real Time Market on Power Exchanges

6.1. Power exchanges use a price discovery mechanism in which the aggregate demand and supply are matched to arrive at an unconstrained market price and volume. This process assumes that there is no congestion in the inter-State transmission system between different regions. However, in reality, the system operator (NLDC), in coordination with RLDCs, limits

³ “Congestion” means a situation where the demand for transmission capacity exceeds the available transfer capability

the flow (due to congestion) in the inter-State transmission system. In such a situation, power exchanges adopt a mechanism called “Market Splitting”⁴.

6.2. The volume of electricity that could not be cleared due to congestion & other reasons and could not be transacted through power exchanges is the difference between unconstrained cleared volume and actual cleared volume. During the month of April 2024, congestion was experienced in DAM and RTM of IEX.

6.3. The volume of electricity that could not be cleared due to congestion in DAM and RTM of IEX was 0.29% and 0.65% of the unconstrained cleared volume, respectively. In terms of time, congestion occurred was 7.36% in DAM and 7.01% in RTM of IEX during the month. (Table-27).

7. Volume and Price of Renewable Energy Certificates (RECs)

7.1. The concept of Renewable Energy Certificates (RECs) seeks to address the mismatch between the availability of renewable energy and the requirement of the obligated entities to meet their renewable purchase obligation by purchasing green attributes of renewable energy remotely located in the form of RECs. The REC mechanism is a market-based instrument to promote renewable sources of energy and the development of the electricity market.

7.2. One REC is equivalent to 1 MWh electricity injected into the grid from renewable energy sources. The REC is exchanged only in the power exchanges approved by CERC within the band of a floor price and forbearance (ceiling) price as notified by CERC from time to time. The first REC trading was held on power exchanges in May 2011.

7.3. The categorisation of RECs has been dispensed with on introduction of the concept of multiplier under the CERC (Terms and Conditions for Renewable Energy Certificates for

⁴“Market Splitting” is a mechanism adopted by Power Exchanges, where the market is split in the event of transmission congestion, into predetermined (by NLDC) bid areas or zones, which are cleared individually at their respective area prices such that the energy balance in every bid area is reached based upon the demand and supply in individual bid areas and using the available transmission corridor capacity between various bid areas simultaneously. As a result of this market splitting the price of electricity in the importing region, where demand for electricity is more than supply, becomes relatively higher than the price of electricity in the exporting region.

Renewable Energy Generation) Regulations, 2022, brought into effect from 05.12.2022. Accordingly, the power exchanges deactivated the Solar and Non-Solar REC contract for trading w.e.f. December 2022. A new contract named “REC” has been made available for trading on the power exchanges. Further, RECs can also be exchanged through trading licensees as per the REC Regulations 2022.

7.4. The details of REC transactions for the month of April 2024 are shown in Table-34. The market clearing volume of RECs transacted on IEX, PXIL and HPX was 618390, 426693 and 35000, respectively. The weighted average market clearing price of these RECs was ₹232/MWh in IEX, ₹209/MWh in PXIL and ₹226/MWh in HPX.

7.5. The gap between the volume of buy and sell bids of RECs placed through power exchanges shows the variation in demand for the RECs. The ratio of buy bids to sell bids was 0.04, 0.03 and 0.01 in IEX, PXIL and HPX, respectively.

7.6. The volume of RECs transacted through Trading Licensees in April 2024 was 102758. The weighted average trade price for the RECs transacted through traders was ₹298/MWh.

8. Inferences:

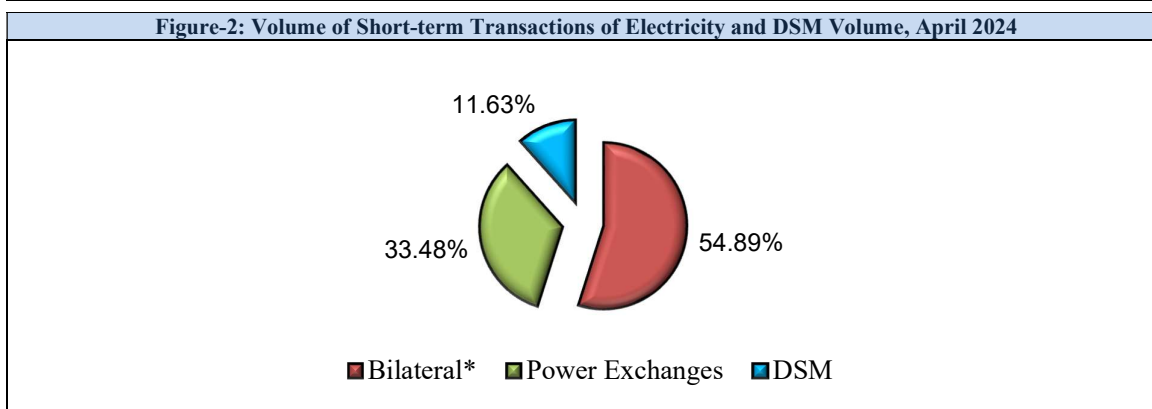
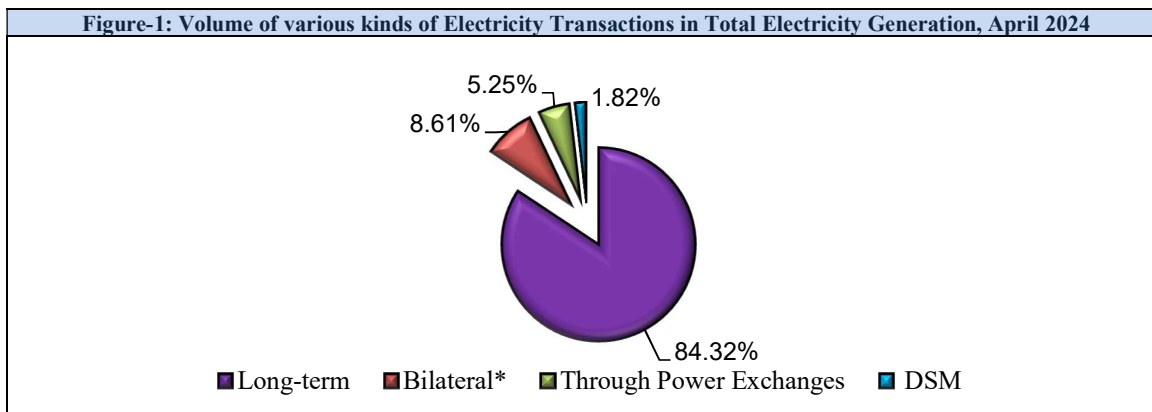
- a) The percentage of short-term transactions of electricity and DSM volume to total electricity generation was 15.68%.
- b) Of the total short-term transactions and DSM volume (21294.65 MU), 54.89% was transacted through bilateral (i.e. through Traders, Term-Ahead contracts on power exchanges and directly between companies), followed by 33.48% through power exchanges {DAM (including G-DAM & HP-DAM) and RTM}, and 11.63% through DSM.
- c) Of the total volume of electricity transacted through power exchanges, 39.07% of the volume was transacted in Term Ahead Market (TAM) (including G-TAM & HP-TAM), followed by 38.42% in DAM (including G-DAM & HP-DAM) and 22.51% in RTM.
- d) The top 5 trading licensees had a share of 80.44% in the total volume traded by all the trading licensees.
- e) The Herfindahl Hirschman Index computed for the volume of electricity traded by trading licensees was 0.1583, indicating moderate concentration of market power.

- f) The weighted average sale price of electricity transacted through trading licensees was ₹8.24/kWh.
- g) The weighted average price of electricity transacted in DAM of IEX and PXIL was ₹4.63/kWh and ₹10.00/kWh, while no electricity was transacted in DAM of HPX. The weighted average price of electricity transacted in G-DAM of IEX was ₹4.08/kWh, while no electricity was transacted in G-DAM of PXIL and HPX. The weighted average price of electricity transacted in HP-DAM of IEX was ₹3.56/kWh, while no electricity was transacted in HP-DAM of PXIL and HPX. The weighted average price of electricity transacted in RTM of IEX, PXIL and HPX was ₹4.78/kWh, ₹10.00/kWh and ₹10.00/kWh, respectively.
- h) The weighted average price of electricity transacted in TAM of IEX, PXIL and HPX was ₹9.41/kWh, ₹9.18/kWh and ₹9.64/kWh, respectively. The weighted average price of electricity transacted in G-TAM of IEX, PXIL and HPX was ₹7.22/kWh, ₹6.44/kWh and ₹3.75/kWh, respectively. The weighted average price of electricity transacted in HP-TAM of IEX, PXIL and HPX was ₹15.00/kWh, ₹13.71/kWh and ₹15.00/kWh, respectively.
- i) The average charge under DSM was ₹5.55/kWh.
- j) The weighted average trading margin charged by the trading licensees for bilateral transactions was ₹0.025/kWh.
- k) The top 5 electricity selling regional entities/states of power exchange transactions were Uttar Pradesh, Haryana, Madhya Pradesh, Chhattisgarh and Delhi. The top 5 electricity purchasing regional entities/states of power exchange transactions were Telangana, Gujarat, Maharashtra, Uttarakhand and Tamil Nadu.
- l) The top 5 under-drawing/ over-injecting regional entities/states under DSM were Tamil Nadu, Maharashtra, Uttar Pradesh, NTPC Stations (Western Region) and Madhya Pradesh. The top 5 over-drawing/ under-injecting regional entities/states under DSM were NTPC Stations (Northern Region), NTPC Stations (Eastern Region), Uttar Pradesh, NTPC Stations (Western Region) and NTPC Stations (Southern Region).

- m) During the month of April 2024, congestion was experienced in DAM and RTM of IEX. The volume of electricity that could not be cleared due to congestion in DAM and RTM of IEX was 0.29% and 0.65% of the unconstrained cleared volume, respectively.
- n) The market clearing volume of RECs transacted on IEX, PXIL and HPX was 618390, 426693 and 35000, respectively. The weighted average market clearing price of these RECs was ₹232//MWh in IEX, ₹209/MWh in PXIL and ₹226/MWh in HPX. The volume of RECs transacted through Trading Licensees in April 2024 was 102758. The weighted average trade price for the RECs transacted through traders was ₹298/MWh.

Table-1: VOLUME OF SHORT-TERM TRANSACTIONS OF ELECTRICITY AND DSM (ALL INDIA), APRIL 2024				
Sr. No	Transaction	Volume (MU)	% to short-term transactions and DSM Volume	% to Total Generation
A	Short-term transactions			
1	Bilateral*	11689.43	54.89	8.61
2	Through Power Exchanges	7128.88	33.48	5.25
	(i) IEX			
	(a) DAM	4131.42	19.40	3.04
	(b) RTM	2628.56	12.34	1.94
	(c) GDAM	360.12	1.69	0.27
	(d) HP-DAM	0.10	0.00	0.00
	(ii) PXIL			
	(a) DAM	3.85	0.02	0.003
	(b) RTM	2.45	0.01	0.002
	(c) GDAM	0.00	0.00	0.00
	(d) HP-DAM	0.00	0.00	0.00
	(ii) HPX			
	(a) DAM	0.00	0.00	0.00
	(b) RTM	2.38	0.01	0.002
	(c) GDAM	0.00	0.00	0.00
	(d) HP-DAM	0.00	0.00	0.00
B	Through DSM	2476.34	11.63	1.82
Total Short-term transactions and DSM		21294.65	-	15.68
Total Generation		135781.26	-	-

Source: NLDC



* With change in the regime on implementation of GNA Regulations from 1st October 2023, the volume reported here is not strictly comparable to the volumes in previous months. Some discrepancies were identified by CERC in the data provided by NLDC which prompted further validation. The volume herein is computed after verification with the volumes reported by the Trading Licensees and the Power Exchanges, and may be subject to further revision. The Commission has directed NLDC, vide letter dated 05.01.2024, to make necessary provisions to differentiate the type of transactions under GNA and T-GNA at the earliest.

Figure-3: Volume transacted in different markets segments on Power Exchanges, April 2024

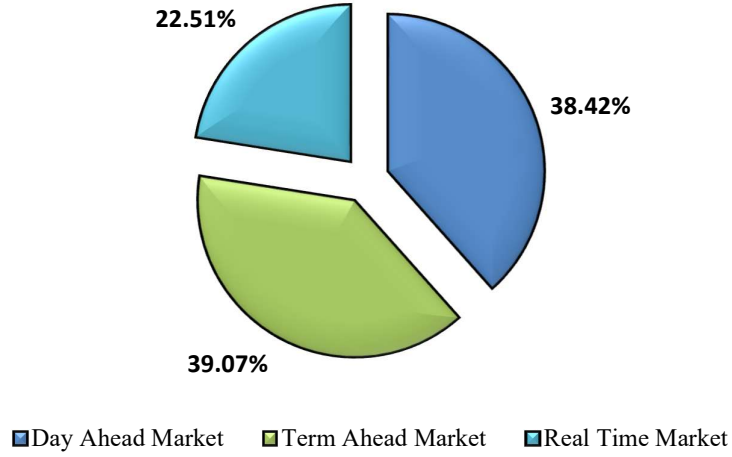


Figure-4: Volume of Transactions on Power Exchanges and DSM Volume, April 2024 (Day-wise)

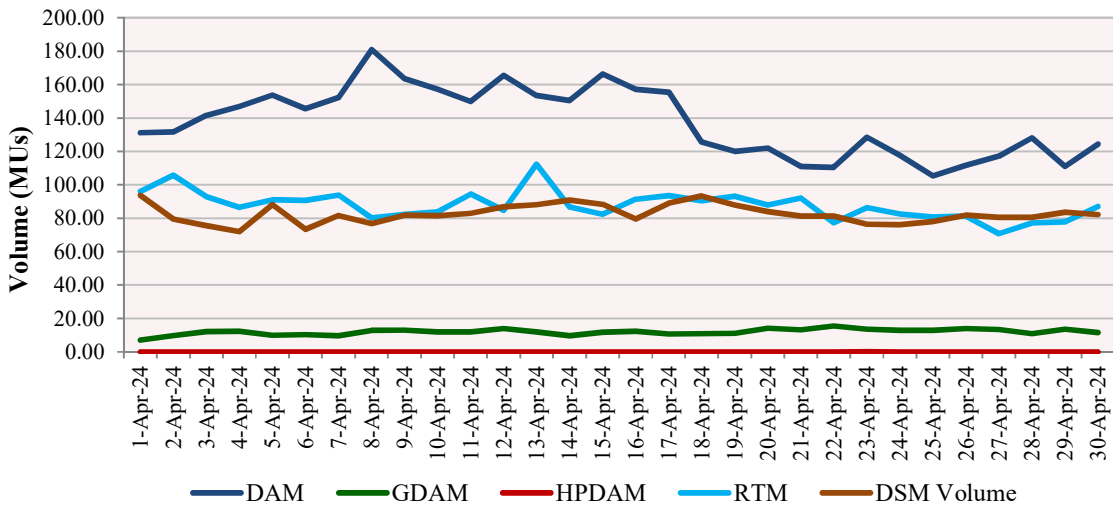


Table-2: PERCENTAGE SHARE OF ELECTRICITY TRANSACTED BY TRADING LICENSEES, APRIL 2024		
Sr. No	Name of the Trading Licensee	% Share in total Volume traded by Trading Licensees
1	PTC India Ltd.	26.69
2	NTPC Vidyut Vyapar Nigam Ltd.	20.38
3	Adani Enterprises Ltd.	15.46
4	Tata Power Trading Company (P) Ltd.	9.53
5	Manikaran Power Ltd.	8.38
6	Arunachal Pradesh Power Corporation (P) Ltd	5.01
7	GMR Energy Trading Ltd.	4.18
8	Ambitious Power Trading Company Ltd.	2.32
9	JSW Power Trading Company Ltd	1.63
10	Shree Cement Ltd.	1.30
11	Instinct Infra & Power Ltd.	0.88
12	NHPC Limited	0.72
13	RPG Power Trading Company Ltd.	0.65
14	Kreate Energy (I) Pvt. Ltd.	0.61
15	Gita Power & Infrastructure Private Limited	0.46
16	Statkraft Markets Pvt. Ltd.	0.26
17	Saranyu Power Trading Private Limited	0.24
18	Kundan International Pvt. Ltd.	0.23
19	Greenko Energies Pvt Ltd	0.19
20	Adarsh Stainless Pvt. Ltd.	0.15
21	Ideal Energy Solution Pvt. Ltd.	0.13
22	SJVN Ltd.	0.10
23	Energyedge Power Trading Pvt. Ltd.	0.10
24	NLC India Ltd.	0.09
25	Instant Ventures Pvt. Ltd.	0.09
26	Abja Power Private Limited	0.07
27	Powerfull Energy Trading Pvt. Ltd.	0.06
28	Phillip Commodities India (P) Ltd.	0.04
29	Customized Energy Solutions India (P) Ltd.	0.02
30	REL Power Trading LLP	0.02
31	Refex Industries Ltd.	0.01
32	Shubheksha Advisors Pvt. Ltd.	0.001
33	Altilium Energie Private Limited	0.0002
34	Saini Power Transactor	0.0002
TOTAL		100.00%
Top 5 trading licensees		80.44%
Herfindahl-Hirschman Index (HHI)		0.1583

Note 1: Volume of electricity transacted by the trading licensees includes bilateral transactions (inter-state & intra-state) and the transactions undertaken through power exchanges.

Source: Information submitted by trading licensees

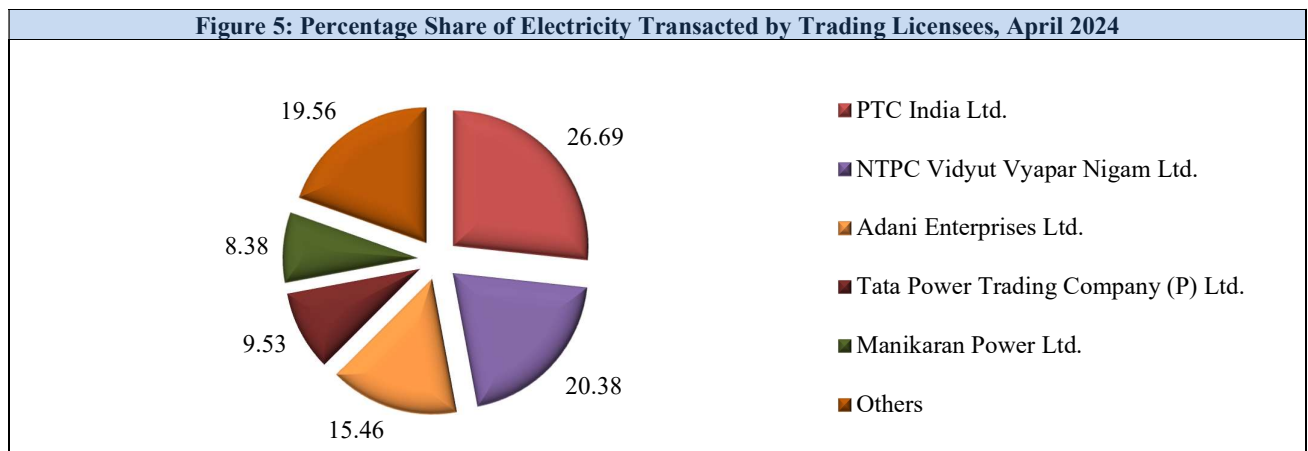


Table-3: PRICE OF ELECTRICITY TRANSACTED THROUGH TRADERS, APRIL 2024		
Sr.No	Item	Sale Price of Traders (₹/kWh)
1	Minimum	4.27
2	Maximum	10.00
3	Weighted Average	8.24

Source: Information submitted by trading licensees

Table-4: PRICE OF ELECTRICITY TRANSACTED THROUGH TRADERS (TIME-WISE), APRIL 2024		
Sr.No	Period of Trade	Sale Price of Traders (₹/kWh)
1	RTC	8.20
2	PEAK	9.93
3	OFF PEAK	8.78

Source: Information submitted by trading licensees

Table-5: PRICE OF ELECTRICITY TRANSACTED IN DAY AHEAD MARKET, APRIL 2024				
Sr.No	ACP	Price in IEX (₹/kWh)	Price in PXIL (₹/kWh)	Price in HPX (₹/kWh)
1	Minimum	1.71	10.00	-
2	Maximum	10.00	10.00	-
3	Weighted Average	4.63	10.00	-

Source: IEX, PXIL and HPX

Table-6: PRICE OF ELECTRICITY TRANSACTED IN GREEN DAY AHEAD MARKET, APRIL 2024				
Sr.No	ACP	Price in IEX (₹/kWh)	Price in PXIL (₹/kWh)	Price in HPX (₹/kWh)
1	Minimum	1.71	-	-
2	Maximum	10.00	-	-
3	Weighted Average	4.08	-	-

Source: IEX, PXIL and HPX

Table-7: PRICE OF ELECTRICITY TRANSACTED IN HIGH PRICE DAY AHEAD MARKET, APRIL 2024				
Sr.No	ACP	Price in IEX (₹/kWh)	Price in PXIL (₹/kWh)	Price in HPX (₹/kWh)
1	Minimum	1.55	-	-
2	Maximum	15.00	-	-
3	Weighted Average	3.56	-	-

Source: IEX, PXIL and HPX

Table-8: PRICE OF ELECTRICITY TRANSACTED IN REAL TIME MARKET, APRIL 2024				
Sr.No	ACP	Price in IEX (₹/kWh)	Price in PXIL (₹/kWh)	Price in HPX (₹/kWh)
1	Minimum	0.99	10.00	10.00
2	Maximum	10.00	10.00	10.00
3	Weighted Average	4.78	10.00	10.00

Source: IEX, PXIL and HPX

Table-9: VOLUME AND PRICE OF ELECTRICITY IN TERM AHEAD MARKET OF IEX, APRIL 2024			
Sr.No	Term ahead contracts	Actual Scheduled Volume (MU)	Weighted Average Price (₹/kWh)
1	Intra-Day Contracts	7.61	9.52
2	Day Ahead Contingency Contracts	127.17	8.31
3	Daily Contracts	513.00	9.41
4	Weekly Contracts	23.52	8.40
5	Monthly Contracts	219.65	9.44
6	Any Day Single Sided Contracts	385.40	9.82
	Total	1276.36	9.41

Source: IEX

Table-10: VOLUME AND PRICE OF ELECTRICITY IN TERM AHEAD MARKET OF PXIL, APRIL 2024			
Sr.No	Term ahead contracts	Actual Scheduled Volume (MU)	Weighted Average Price (₹/kWh)
1	Intra-Day Contracts	22.03	9.59
2	Day Ahead Contingency Contracts	309.18	8.37
3	Daily Contracts	547.43	9.57
4	Weekly Contracts	83.50	8.40
5	Monthly Contracts	787.71	9.19
6	Any Day Single Sided Contracts	102.39	9.98
	Total	1852.24	9.18

Source: PXIL

Table-11: VOLUME AND PRICE OF ELECTRICITY IN TERM AHEAD MARKET OF HPX, APRIL 2024			
Sr.No	Term ahead contracts	Actual Scheduled Volume (MU)	Weighted Average Price (₹/kWh)
1	Intra-Day Contracts	22.32	9.98
2	Day Ahead Contingency Contracts	109.71	9.09
3	Daily Contracts	530.01	9.59
4	Monthly Contracts	67.34	9.56
5	Any Day Single Sided Contracts	299.95	9.92
	Total	1029.32	9.64

Source: HPX

Table-12: VOLUME AND PRICE OF ELECTRICITY IN GREEN TAM OF IEX, APRIL 2024			
Sr. No	Green Term ahead contracts	Actual Scheduled Volume (MU)	Weighted Average Price (₹/kWh)
1	Day Ahead Contingency Contracts	1.29	8.77
2	Daily Contracts	7.13	7.26
3	Monthly Contracts	21.60	8.26
4	Any Day Single Sided Contracts	10.71	4.90
	Total	40.72	7.22

Source: IEX

Table-13: VOLUME AND PRICE OF ELECTRICITY IN GREEN TAM OF PXIL, APRIL 2024			
Sr. No	Green Term ahead contracts	Actual Scheduled Volume (MU)	Weighted Average Price (₹/kWh)
1	Day Ahead Contingency Contracts	3.47	6.44
	Total	3.47	6.44

Source: PXIL

Table-14: VOLUME AND PRICE OF ELECTRICITY IN GREEN TAM OF HPX, APRIL 2024			
Sr. No	Green Term ahead contracts	Actual Scheduled Volume (MU)	Weighted Average Price (₹/kWh)
1	Day Ahead Contingency Contracts	95.78	3.75
2	Any Day Single Sided Contracts	4.80	3.78
	Total	100.58	3.75

Source: HPX

Table-15: VOLUME AND PRICE OF ELECTRICITY IN HIGH PRICE TAM OF IEX, APRIL 2024			
Sr. No	High Price Term ahead contracts	Actual Scheduled Volume (MU)	Weighted Average Price (₹/kWh)
1	Intra-Day Contracts	1.00	15.00
	Total	1.00	15.00

Source: IEX

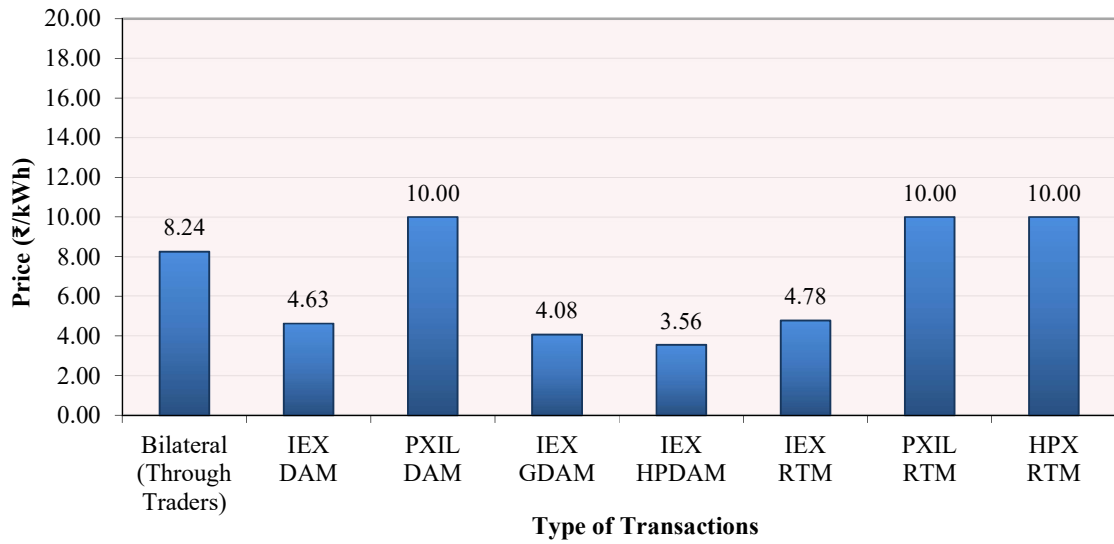
Table-16: VOLUME AND PRICE OF ELECTRICITY IN HIGH PRICE TAM OF PXIL, APRIL 2024			
Sr. No	High Price Term ahead contracts	Actual Scheduled Volume (MU)	Weighted Average Price (₹/kWh)
1	Intra-Day Contracts	12.97	14.90
2	Day Ahead Contingency Contracts	7.46	15.00
3	Daily Contracts	111.00	10.78
4	Monthly Contracts	130.97	16.00
	Total	262.40	13.71

Source: PXIL

Table-17: VOLUME AND PRICE OF ELECTRICITY IN HIGH PRICE TAM OF HPX, APRIL 2024			
Sr. No	High Price Term ahead contracts	Actual Scheduled Volume (MU)	Weighted Average Price (₹/kWh)
1	Intra-Day Contracts	3.45	15.00
	Day Ahead Contingency Contracts	0.23	15.00
	Daily Contracts	2.40	15.00
	Total	6.08	15.00

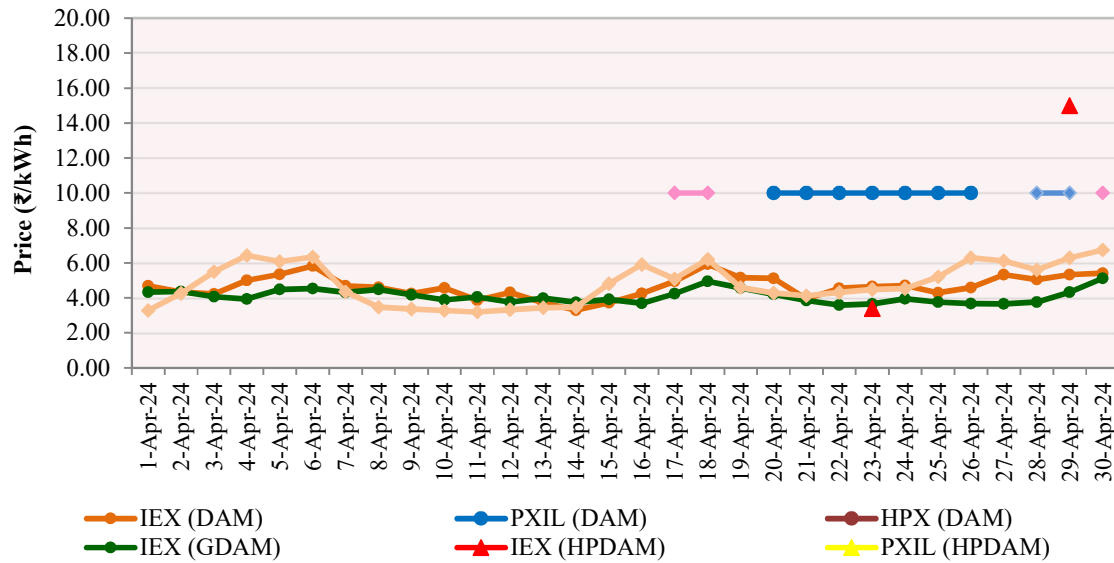
Source: HPX

Figure-6: Weighted Average Price of Short-term Transactions of Electricity, April 2024



Note: No electricity was transacted in DAM of HPX, G-DAM of PXIL & HPX, and in HP-DAM of PXIL & HPX during April 2024

Figure-7: Weighted Average Price of Short-term Transactions of Electricity, April 2024 (Day-wise)



Note: No electricity was transacted in DAM of HPX, G-DAM of PXIL & HPX, and in HP-DAM of PXIL & HPX during April 2024

Table-18: VOLUME OF ELECTRICITY SOLD IN DAY AHEAD MARKET THROUGH POWER EXCHANGES, APRIL 2024		
Name of the Entity	Volume of Sale (MUs)	% of Volume
UTTAR PRADESH	859.59	20.79
HARYANA	428.86	10.37
CHHATTISGARH	241.14	5.83
MP	228.39	5.52
DELHI	197.12	4.77
DB POWER	131.72	3.19
HIMACHAL PRADESH	116.67	2.82
JINDAL STAGE-II	107.44	2.60
NTPC STATIONS-ER	98.61	2.38
ADANI 4RE	81.81	1.98
ESSAR POWER	81.70	1.98
JITPL	79.93	1.93
MAHARASHTRA	78.30	1.89
DCPP	71.34	1.73
ARTPP	64.04	1.55
PUNJAB	62.96	1.52
GUJARAT	62.68	1.52
WEST BENGAL	48.98	1.18
JINDAL POWER	44.17	1.07
RAJASTHAN	43.23	1.05
TELANGANA	42.10	1.02
ASEJTL SLR	40.87	0.99
SEBPCORP	40.26	0.97
RENEW SPRATAP	38.16	0.92
ACBIL	38.03	0.92
NTPC STATIONS-NR	37.58	0.91
RAIGARH ADANI	36.92	0.89
ANDHRA PRADESH	36.68	0.89
RENEW SR SLR	36.36	0.88
CHANDIGARH	34.65	0.84
ADANI S RJ2	32.73	0.79
GOA	30.34	0.73
DVC	28.81	0.70
ADEPT	28.70	0.69
RKM POWER	28.57	0.69
TRN ENERGY	27.00	0.65
ODISHA	25.03	0.61
AD HYDRO	24.82	0.60
ADANI GREEN 25B (INFIRM)	24.22	0.59
KARCHAM WANGTOO	23.58	0.57
ADANI WIND	23.22	0.56
PONDICHERRY	23.16	0.56
ONEVOLT	21.73	0.53
JAYPEE NIGRIE	21.39	0.52
AMP GREEN6	20.98	0.51
DGEN MEGA POWER	18.35	0.44
NTPC STATIONS-SR	17.28	0.42
IBEUL	14.82	0.36
SKS POWER	13.37	0.32
TAMIL NADU	13.03	0.32
RENEW ROSHNI FATEHGARH	12.80	0.31
GRIAN	12.67	0.31
ADANI W KUTCHH4 (INFIRM)	11.47	0.28
DHARIWAL POWER	10.76	0.26

SAINJ HEP	9.57	0.23
KSK MAHANADI	9.51	0.23
SORANG HEP	7.51	0.18
IL&FS	6.65	0.16
RENERGY5 WIND	6.33	0.15
NTPC STATIONS-WR	5.67	0.14
ADANI GREEN 26B (INFIRM)	4.95	0.12
BRBCL, NABINAGAR	4.30	0.10
SINGOLI BHATWARI HEP	4.26	0.10
BIHAR	4.20	0.10
OSTRO Hiriyur	3.98	0.10
NPGC	3.62	0.09
MARUTI COAL	3.57	0.09
ADANIRE 55 (INFIRM)	3.28	0.08
SIKKIM	3.27	0.08
J & K	3.02	0.07
SIMHAPURI	2.65	0.06
KERALA	2.62	0.06
IGSTPS	2.62	0.06
TESPL	2.39	0.06
MEGHALAYA	2.30	0.06
NTPC STATIONS-NER	2.23	0.05
MIZORAM	1.94	0.05
GMR KAMALANGA	1.84	0.04
NAGALAND	1.72	0.04
SHREE CEMENT	1.64	0.04
KBUNL	1.56	0.04
AMPLUS AGES	1.19	0.03
LANCO BUDHIL	1.17	0.03
UTTARAKHAND	1.09	0.03
RENEW SOJAS	1.08	0.03
CONTINNUM PT	0.97	0.02
MTPS	0.78	0.02
JHABUA POWER MP	0.73	0.02
TPSL	0.52	0.01
NETCL VALLUR	0.32	0.01
EMCO	0.30	0.01
NLC	0.22	0.01
KARNATAKA	0.17	0.004
MB POWER	0.14	0.003
BALCO	0.12	0.003
ARUNACHAL PRADESH	0.10	0.002
MAITHON POWER LTD	0.07	0.002
NEEPCO STATIONS	0.02	0.001
NANI VIRANI W	0.01	0.0003
Total	4135.27	100.00
Volume sold by top 5 Regional Entities	1955.11	47.28
Herfindahl-Hirschman Index (HHI)		0.0702

Table-19: VOLUME OF ELECTRICITY PURCHASED IN DAY AHEAD MARKET THROUGH POWER EXCHANGES, APRIL 2024

Name of the Entity	Volume of Purchase (MUs)	% of Volume
GUJARAT	797.25	19.28
TELANGANA	512.50	12.39
UTTARAKHAND	336.99	8.15
MAHARASHTRA	283.56	6.86
UTTAR PRADESH	227.03	5.49
WEST BENGAL	212.70	5.14
NEPAL(NVVN)	186.70	4.51
KARNATAKA	180.13	4.36
TAMIL NADU	177.79	4.30
HIMACHAL PRADESH	154.29	3.73
ANDHRA PRADESH	123.59	2.99
DGPCL Bhutan	121.38	2.94
RAJASTHAN	119.36	2.89
ODISHA	116.20	2.81
J & K	115.03	2.78
KERALA	84.06	2.03
BIHAR	60.37	1.46
MP	41.71	1.01
MEGHALAYA	36.90	0.89
DD&DNH	36.40	0.88
AMPS Hazira	31.42	0.76
PUNJAB	30.46	0.74
MB POWER	21.24	0.51
HARYANA	20.05	0.48
MANIPUR	19.76	0.48
NEP	18.64	0.45
NCR ALLAHABAD	16.34	0.40
GOA	14.42	0.35
SIKKIM	12.87	0.31
JHARKHAND	7.54	0.18
DELHI	4.67	0.11
CHHATTISGARH	3.82	0.09
SKS POWER	3.57	0.09
NAGALAND	1.76	0.04
TRIPURA	1.35	0.03
DVC	1.28	0.03
CHANDIGARH	1.21	0.03
JHABUA POWER_MP	0.55	0.01
ARUNACHAL PRADESH	0.32	0.01
ASSAM	0.08	0.002
TOTAL	4135.27	100.00
Volume purchased by top 5 Regional Entities	2157.34	52.17
Herfindahl-Hirschman Index (HHI)		0.0820

Table-20: VOLUME OF ELECTRICITY SOLD IN GREEN DAY AHEAD MARKET THROUGH POWER EXCHANGES, APRIL 2024

Name of the Entity	Volume of Sale (MUs)	% of Volume
TPSL	39.51	10.97
ADANI_4RE	37.53	10.42
ANDHRA PRADESH	26.98	7.49
MP	25.63	7.12
ADANI GREEN_25B (INFIRM)	25.25	7.01
ASEJTL_SLR	23.96	6.65
HIMACHAL PRADESH	20.52	5.70
AMPLUS_AGES	18.15	5.04
UTTAR PRADESH	16.11	4.47
RENEW_ROSHNI FATEHGARH	14.85	4.12
ADANI_WIND	12.96	3.60
GRIAN	12.91	3.59
UTTARAKHAND	8.27	2.30
MAHARASHTRA	8.02	2.23
ADANI_W_KUTCHH4 (INFIRM)	7.84	2.18
RENEW_SR_SLR	7.48	2.08
TESPL	5.89	1.64
ADANI_S_RJ2	5.65	1.57
RAJASTHAN	4.35	1.21
JSW_RENEW_2	4.12	1.14
CONTINNUM PT	3.94	1.09
OSTRO Hiriya	3.82	1.06
AYANA_RP3	3.79	1.05
WEST BENGAL	3.73	1.03
RENERGY5_WIND	3.66	1.02
SINGOLI BHATWARI HEP	3.40	0.95
ADANI GREEN_26B (INFIRM)	3.14	0.87
ADANIRE_55 (INFIRM)	2.16	0.60
NANI VIRANI_W	2.14	0.60
KARNATAKA	1.17	0.33
ADANI GREEN_25A (INFIRM)	0.93	0.26
J & K	0.91	0.25
RENEW_SOJAS	0.90	0.25
DELHI	0.28	0.08
ADANI GREEN_26A (INFIRM)	0.17	0.05
Total	360.12	100.00
Volume sold by top 5 Regional Entities	154.91	43.02
Herfindahl-Hirschman Index (HHI)		0.0585

Table-21: VOLUME OF ELECTRICITY PURCHASED IN GREEN DAY AHEAD MARKET THROUGH POWER EXCHANGES, APRIL 2024		
Name of the Entity	Volume of Purchase (MUs)	% of Volume
MAHARASHTRA	78.03	21.67
TAMIL NADU	56.86	15.79
DVC	42.01	11.67
AMPS Hazira	28.55	7.93
DELHI	23.72	6.59
NCR ALLAHABAD	20.80	5.78
UTTAR PRADESH	19.59	5.44
GUJARAT	13.46	3.74
JHARKHAND	12.11	3.36
KARNATAKA	10.70	2.97
PUNJAB	9.30	2.58
BALCO	7.44	2.07
KERALA	6.66	1.85
HARYANA	5.97	1.66
ODISHA	5.84	1.62
TELANGANA	5.09	1.41
ANDHRA PRADESH	4.67	1.30
MP	4.61	1.28
RAJASTHAN	2.84	0.79
CHHATTISGARH	1.27	0.35
DD&DNH	0.62	0.17
TOTAL	360.12	100.00
Volume purchased by top 5 Regional Entities	229.17	63.64
Herfindahl-Hirschman Index (HHI)		0.1084

Table-22: VOLUME OF ELECTRICITY SOLD IN HIGH PRICE DAY AHEAD MARKET THROUGH POWER EXCHANGES, APRIL 2024		
Name of the Entity	Volume of Sale (MUs)	% of Volume
NTPC STATIONS-NR	0.06	58.74
NTPC STATIONS-WR	0.04	39.70
GUJARAT	0.002	1.55
Total	0.10	100.00
Volume sold by top 5 Regional Entities	0.10	100.00
Herfindahl-Hirschman Index (HHI)		0.5030

Table-23: VOLUME OF ELECTRICITY PURCHASED IN HIGH PRICE DAY AHEAD MARKET THROUGH POWER EXCHANGES, APRIL 2024		
Name of the Entity	Volume of Purchase (MUs)	% of Volume
WEST BENGAL	0.10	100.00
TOTAL	0.10	100.00
Volume purchased by top 5 Regional Entities	0.10	100.00
Herfindahl-Hirschman Index (HHI)		1.00

Table-24: VOLUME OF ELECTRICITY SOLD IN REAL TIME MARKET THROUGH POWER EXCHANGES, APRIL 2024

Name of the Entity	Volume of Sale (MUs)	% of Volume
MP	343.42	13.04
UTTAR PRADESH	264.69	10.05
HARYANA	217.38	8.25
CHHATTISGARH	191.86	7.29
BIHAR	178.97	6.80
ASSAM	141.85	5.39
PUNJAB	103.93	3.95
RAJASTHAN	89.76	3.41
WEST BENGAL	75.94	2.88
ODISHA	74.61	2.83
DELHI	72.55	2.76
MAHARASHTRA	72.36	2.75
NTPC STATIONS-NR	65.63	2.49
ANDHRA PRADESH	55.80	2.12
JHARKHAND	55.58	2.11
HIMACHAL PRADESH	43.08	1.64
DVC	32.11	1.22
GUJARAT	30.10	1.14
NTPC STATIONS-ER	29.48	1.12
MB POWER	26.86	1.02
TELANGANA	22.91	0.87
PONDICHERRY	19.87	0.75
NTPC STATIONS-WR	19.53	0.74
J & K	18.27	0.69
MANIPUR	16.13	0.61
BALCO	14.41	0.55
MTPS	14.37	0.55
RENEW SOJAS	14.19	0.54
TRN ENERGY	14.15	0.54
DGEN MEGA POWER	13.98	0.53
RKM POWER	13.94	0.53
NEEPCO STATIONS	13.80	0.52
ADANI WIND	13.20	0.50
SASAN UMPP	12.91	0.49
RENEW ROSHNI FATEHGARH	12.18	0.46
ARTPP	11.13	0.42
TAMIL NADU	11.00	0.42
SEMBCORP	10.77	0.41
IGSTPS	10.42	0.40
NTPC STATIONS-SR	10.09	0.38
ESSAR POWER	9.02	0.34
SIKKIM	8.84	0.34
ARUNACHAL PRADESH	8.69	0.33
NREL DAYAPAR (W)	8.47	0.32
JHABUA POWER MP	7.82	0.30
JINDAL STAGE-II	7.67	0.29
ADANI 4RE	7.22	0.27
NLC	6.53	0.25
ACBIL	6.39	0.24
ADHUNIK POWER LTD	6.15	0.23
KERALA	6.12	0.23
UTTARAKHAND	5.77	0.22
RENEW SR SLR	4.96	0.19
TESPL	4.63	0.18
RAIGARH ADANI	4.60	0.17
AMP GREEN6	4.14	0.16
GOA	3.88	0.15

DB POWER	3.75	0.14
RENEW SPRATAP	3.75	0.14
ONEVOLT	3.48	0.13
AMPLUS AGES	3.34	0.13
ADANI GREEN 25B (INFIRM)	2.98	0.11
NPGC	2.97	0.11
KSK MAHANADI	2.88	0.11
SKS POWER	2.76	0.10
ASEJTL SLR	2.68	0.10
NAGALAND	2.61	0.10
EMCO	2.50	0.09
RAPP 7&8	2.47	0.09
MEENAKSHI	2.21	0.08
IL&FS	2.08	0.08
NTPC STATIONS-NER	2.03	0.08
SORANG HEP	1.97	0.07
SINGOLI BHATWARI HEP	1.86	0.07
JINDAL POWER	1.80	0.07
KARCHAM WANGTOO	1.46	0.06
MEGHALAYA	1.40	0.05
NETCL VALLUR	1.37	0.05
ADEPT	1.27	0.05
ONGC PALATANA	1.21	0.05
KARNATAKA	1.18	0.04
SIMHAPURI	1.12	0.04
BRBCL,NABINAGAR	1.09	0.04
CHANDIGARH	1.04	0.04
AD HYDRO	0.99	0.04
TRIPURA	0.99	0.04
OSTRO Hiriyur	0.94	0.04
DCPP	0.83	0.03
SAINJ HEP	0.79	0.03
DHARIWAL POWER	0.76	0.03
DD&DNH	0.69	0.03
ADANI S RJ2	0.68	0.03
TPSL	0.61	0.02
RISING SLR	0.52	0.02
LANCO BUDHIL	0.49	0.02
SHREE CEMENT	0.29	0.01
BASOCHHU HEP	0.24	0.01
ADANI GREEN 26B (INFIRM)	0.24	0.01
GMR KAMALANGA	0.20	0.01
NEPAL(NVVN)	0.18	0.01
GRIAN	0.17	0.01
MARUTI COAL	0.12	0.004
LANKO KONDAPALLI	0.11	0.004
CHUZACHEN HEP	0.09	0.003
MIZORAM	0.04	0.001
RENERGY5 WIND	0.03	0.001
JAYPEE NIGRIE	0.02	0.001
NANI VIRANI W	0.01	0.0003
ADANIRE 55 (INFIRM)	0.01	0.0003
MAITHON POWER LTD	0.003	0.0001
COASTGEN	0.001	0.00004
Total	2633.38	100.00
Volume sold by top 5 Regional Entities	1196.32	45.43
Herfindahl-Hirschman Index (HHI)		0.0557

Table-25: VOLUME OF ELECTRICITY PURCHASED IN REAL TIME MARKET THROUGH POWER EXCHANGES, APRIL 2024		
Name of the Entity	Volume of Purchase (MUs)	% of Volume
TELANGANA	338.91	12.87
MAHARASHTRA	245.47	9.32
RAJASTHAN	239.76	9.10
UTTAR PRADESH	168.14	6.39
J & K	154.95	5.88
TAMIL NADU	141.64	5.38
ANDHRA PRADESH	133.20	5.06
PUNJAB	129.43	4.91
ODISHA	119.47	4.54
WEST BENGAL	112.92	4.29
KARNATAKA	112.36	4.27
HIMACHAL PRADESH	110.27	4.19
KERALA	79.49	3.02
GUJARAT	71.89	2.73
BIHAR	70.16	2.66
UTTARAKHAND	54.69	2.08
JHARKHAND	39.71	1.51
DELHI	37.49	1.42
DD&DNH	29.21	1.11
TRIPURA	24.96	0.95
DVC	23.96	0.91
MP	22.18	0.84
SIMHAPURI	20.68	0.79
SHREE CEMENT	20.23	0.77
DGPCL Bhutan	17.41	0.66
CHHATTISGARH	14.41	0.55
ASSAM	14.22	0.54
AMPS Hazira	13.82	0.52
MB POWER	8.96	0.34
MEGHALAYA	7.93	0.30
SKS POWER	7.69	0.29
HARYANA	7.65	0.29
ARUNACHAL PRADESH	7.49	0.28
MANIPUR	6.80	0.26
GOA	6.08	0.23
ARTPP	5.56	0.21
NCR ALLAHABAD	4.39	0.17
NAGALAND	2.68	0.10
BALCO	2.54	0.10
ESSAR POWER	1.62	0.06
SIKKIM	0.83	0.03
RGPPL IR	0.78	0.03
NTPC STATIONS-WR	0.49	0.02
NEPAL(NVVN)	0.36	0.01
ACBIL	0.28	0.01
SAINJ HEP	0.14	0.01
NEP	0.06	0.002
JHABUA POWER MP	0.03	0.001
TOTAL	2633.38	100.00
Volume purchased by top 5 Regional Entities	1147.24	43.57
Herfindahl-Hirschman Index (HHI)		0.0603

Table-26: TOTAL VOLUME OF NET TRANSACTIONS THROUGH POWER EXCHANGES (REGIONAL ENTITY-WISE), APRIL 2024		
S. No.	Name of the Entity	Total volume of net transactions through Power Exchanges*
1	TELANGANA	791.49
2	GUJARAT	789.81
3	MAHARASHTRA	448.38
4	UTTARAKHAND	376.55
5	TAMIL NADU	352.25
6	KARNATAKA	300.66
7	J & K	247.78
8	RAJASTHAN	224.62
9	WEST BENGAL	197.08
10	NEPAL(NVVN)	186.88
11	KERALA	161.48
12	ANDHRA PRADESH	142.01
13	ODISHA	141.86
14	DGPCL Bhutan	138.79
15	HIMACHAL PRADESH	84.28
16	AMPS Hazira	73.79
17	DD&DNH	65.53
18	NCR ALLAHABAD	41.53
19	MEGHALAYA	41.13
20	TRIPURA	25.32
21	NEP	18.70
22	SHREE CEMENT	18.30
23	SIMHAPURI	16.91
24	MANIPUR	10.43
25	DVC	6.33
26	JHARKHAND	3.78
27	MB POWER	3.20
28	PUNJAB	2.31
29	SIKKIM	1.58
30	RGPPL IR	0.78
31	NAGALAND	0.11
32	COASTGEN	-0.001
33	MAITHON POWER LTD	-0.07
34	CHUZACHEN HEP	-0.09
35	LANKO KONDAPALLI	-0.11
36	ADANI GREEN 26A (INFIRM)	-0.17
37	BASOCHHU HEP	-0.24
38	RISING SLR	-0.52
39	ADANI GREEN 25A (INFIRM)	-0.93
40	ARUNACHAL PRADESH	-0.96
41	ONGC PALATANA	-1.21
42	KBUNL	-1.56
43	LANCO BUDHIL	-1.66
44	NETCL VALLUR	-1.68
45	MIZORAM	-1.98
46	GMR KAMALANGA	-2.04
47	NANI VIRANI W	-2.16
48	MEENAKSHI	-2.21
49	RAPP 7&8	-2.47
50	EMCO	-2.80
51	MARUTI COAL	-3.69
52	AYANA RP3	-3.79
53	JSW RENEW 2	-4.12
54	NTPC STATIONS-NER	-4.26
55	BALCO	-4.55
56	SKS POWER	-4.88
57	CONTINNUM PT	-4.91
58	BRBCL,NABINAGAR	-5.38
59	ADANIRE 55 (INFIRM)	-5.45
60	ADHUNIK POWER LTD	-6.15
61	NPGC	-6.58
62	NLC	-6.75

63	JHABUA POWER MP	-7.97
64	ADANI GREEN 26B (INFIRM)	-8.32
65	NREL DAYAPAR (W)	-8.47
66	IL&FS	-8.73
67	OSTRO Hiriyyur	-8.74
68	SORANG HEP	-9.48
69	SINGOLI BHATWARI HEP	-9.53
70	RENERGY5 WIND	-10.02
71	SAINJ HEP	-10.21
72	DHARIWAL POWER	-11.51
73	KSK MAHANADI	-12.39
74	TESPL	-12.91
75	SASAN UMPP	-12.91
76	IGSTPS	-13.03
77	GOA	-13.72
78	NEEPCO STATIONS	-13.82
79	IBEUL	-14.82
80	MTPS	-15.15
81	RENEW SOJAS	-16.17
82	ADANI W KUTCHH4 (INFIRM)	-19.31
83	JAYPEE NIGRIE	-21.40
84	AMPLUS AGES	-22.67
85	NTPC STATIONS-WR	-24.75
86	KARCHAM WANGTOO	-25.04
87	AMP GREEN6	-25.12
88	ONEVOLT	-25.21
89	GRIAN	-25.76
90	AD HYDRO	-25.81
91	NTPC STATIONS-SR	-27.37
92	ADEPT	-29.96
93	DGEN MEGA POWER	-32.33
94	CHANDIGARH	-34.49
95	ADANI S RJ2	-39.05
96	RENEW ROSHNI FATEHGARH	-39.83
97	TPSL	-40.64
98	TRN ENERGY	-41.15
99	RAIGARH ADANI	-41.52
100	RENEW SPRATAP	-41.90
101	RKM POWER	-42.51
102	PONDICHERRY	-43.03
103	ACBIL	-44.14
104	JINDAL POWER	-45.97
105	RENEW SR SLR	-48.79
106	ADANI WIND	-49.39
107	SEMBCORP	-51.03
108	ADANI GREEN 25B (INFIRM)	-52.45
109	BIHAR	-52.64
110	ASEJTL SLR	-67.50
111	ARTPP	-69.61
112	DCPP	-72.17
113	JITPL	-79.93
114	ESSAR POWER	-89.11
115	NTPC STATIONS-NR	-103.27
116	JINDAL STAGE-II	-115.10
117	ADANI 4RE	-126.56
118	ASSAM	-127.56
119	NTPC STATIONS-ER	-128.08
120	DB POWER	-135.47
121	DELHI	-204.07
122	CHHATTISGARH	-413.50
123	MP	-528.96
124	HARYANA	-612.58
125	UTTAR PRADESH	-725.64
* Total net includes net of transactions of electricity through various segments on power exchanges		
(-) indicates sale and (+) indicates purchase		

Table-27: DETAILS OF CONGESTION IN POWER EXCHANGES, APRIL 2024

	Details of Congestion	Day Ahead Market			Green Day Ahead Market			High Price Day Ahead Market			Real Time Market		
		IEX	PXIL	HPX	IEX	PXIL	HPX	IEX	PXIL	HPX	IEX	PXIL	HPX
1	Unconstrained Cleared Volume (MUs)	4143.31	3.85	0.00	360.12	0.00	0.00	0.10	0.00	0.00	2645.85	2.45	2.38
2	Actual Cleared Volume and hence scheduled (MUs)	4131.42	3.85	0.00	360.12	0.00	0.00	0.10	0.00	0.00	2628.56	2.45	2.38
3	Volume of electricity that could not be cleared and hence not scheduled because of congestion (MUs) *	11.89	0.00	0.00	0.00	0.00	0.00	0.00	0.00	0.00	17.30	0.00	0.00
4	Volume of electricity that could not be cleared and hence not scheduled because of reasons other than congestion (MUs)	0.00	0.00	0.00	0.00	0.00	0.00	0.00	0.00	0.00	0.00	0.00	0.00
5	Volume of electricity that could not be cleared as % to Unconstrained Cleared Volume	0.29%	0.00%	0.00%	0.00%	0.00%	0.00%	0.00%	0.00%	0.00%	0.65%	0.00%	0.00%
6	Percentage of the time congestion occurred during the month (Number of hours congestion occurred/ Total number of hours in the month)	7.36%	0.00%	0.00%	0.00%	0.00%	0.00%	0.00%	0.00%	0.00%	7.01%	0.00%	0.00%
7	Congestion occurrence (%) time block wise												
	0.00 - 6.00 hours	3.30%	0.00%	0.00%	0.00%	0.00%	0.00%	0.00%	0.00%	0.00%	15.84%	0.00%	0.00%
	6.00 - 12.00 hours	2.83%	0.00%	0.00%	0.00%	0.00%	0.00%	0.00%	0.00%	0.00%	0.00%	0.00%	0.00%
	12.00 - 18.00 hours	16.98%	0.00%	0.00%	0.00%	0.00%	0.00%	0.00%	0.00%	0.00%	9.90%	0.00%	0.00%
	18.00 - 24.00 hours	76.89%	0.00%	0.00%	0.00%	0.00%	0.00%	0.00%	0.00%	0.00%	74.26%	0.00%	0.00%

* This power would have been scheduled had there been no congestion

Source: IEX, PXIL, HPX & NLDC

Table-28: VOLUME OF TRANSACTIONS THROUGH POWER EXCHANGES (DAY-WISE) (MUs), APRIL 2024

Date	Day Ahead Market [#]			Green Day Ahead Market [#]			High Price DAM [#]			Real Time Market [#]			Total Electricity Generation (MU) *
	IEX	PXIL	HPX	IEX	PXIL	HPX	IEX	PXIL	HPX	IEX	PXIL	HPX	
1-Apr-24	131.16	0.00	0.00	7.07	0.00	0.00	0.00	0.00	0.00	96.11	0.00	0.00	4307.89
2-Apr-24	131.77	0.00	0.00	9.76	0.00	0.00	0.00	0.00	0.00	105.71	0.00	0.00	4410.18
3-Apr-24	141.51	0.00	0.00	12.15	0.00	0.00	0.00	0.00	0.00	92.84	0.00	0.00	4503.46
4-Apr-24	146.90	0.00	0.00	12.40	0.00	0.00	0.00	0.00	0.00	86.59	0.00	0.00	4587.01
5-Apr-24	153.68	0.00	0.00	10.06	0.00	0.00	0.00	0.00	0.00	90.99	0.00	0.00	4613.77
6-Apr-24	145.50	0.00	0.00	10.42	0.00	0.00	0.00	0.00	0.00	90.64	0.00	0.00	4565.47
7-Apr-24	152.26	0.00	0.00	9.65	0.00	0.00	0.00	0.00	0.00	93.95	0.00	0.00	4329.83
8-Apr-24	180.90	0.00	0.00	12.89	0.00	0.00	0.00	0.00	0.00	80.19	0.00	0.00	4411.73
9-Apr-24	163.57	0.00	0.00	12.98	0.00	0.00	0.00	0.00	0.00	82.29	0.00	0.00	4437.40
10-Apr-24	157.30	0.00	0.00	12.02	0.00	0.00	0.00	0.00	0.00	83.85	0.00	0.00	4463.52
11-Apr-24	149.84	0.00	0.00	11.95	0.00	0.00	0.00	0.00	0.00	94.52	0.00	0.00	4401.05
12-Apr-24	165.61	0.00	0.00	13.91	0.00	0.00	0.00	0.00	0.00	84.74	0.00	0.00	4405.08
13-Apr-24	153.54	0.00	0.00	11.90	0.00	0.00	0.00	0.00	0.00	112.27	0.00	0.00	4389.76
14-Apr-24	150.38	0.00	0.00	9.69	0.00	0.00	0.00	0.00	0.00	86.76	0.00	0.00	4223.05
15-Apr-24	166.27	0.00	0.00	11.82	0.00	0.00	0.00	0.00	0.00	82.40	0.00	0.00	4526.14
16-Apr-24	157.00	0.00	0.00	12.29	0.00	0.00	0.00	0.00	0.00	91.35	0.00	0.00	4602.42
17-Apr-24	155.41	0.00	0.00	10.78	0.00	0.00	0.00	0.00	0.00	93.15	0.00	0.35	4638.13
18-Apr-24	125.63	0.00	0.00	10.97	0.00	0.00	0.00	0.00	0.00	90.25	0.00	0.25	4656.94
19-Apr-24	119.99	0.00	0.00	11.01	0.00	0.00	0.00	0.00	0.00	93.17	0.00	0.00	4508.78
20-Apr-24	121.75	0.30	0.00	14.22	0.00	0.00	0.00	0.00	0.00	87.97	0.00	0.00	4574.14
21-Apr-24	110.76	0.24	0.00	13.31	0.00	0.00	0.00	0.00	0.00	92.13	0.00	0.00	4430.96
22-Apr-24	110.00	0.43	0.00	15.52	0.00	0.00	0.00	0.00	0.00	77.27	0.00	0.00	4520.52
23-Apr-24	127.48	1.04	0.00	13.59	0.00	0.00	0.10	0.00	0.00	86.04	0.33	0.00	4526.48
24-Apr-24	116.90	0.75	0.00	12.97	0.00	0.00	0.00	0.00	0.00	82.62	0.00	0.00	4574.94
25-Apr-24	104.71	0.66	0.00	12.88	0.00	0.00	0.00	0.00	0.00	80.69	0.00	0.00	4719.48
26-Apr-24	111.27	0.44	0.00	14.05	0.00	0.00	0.00	0.00	0.00	81.27	0.00	0.00	4676.14
27-Apr-24	117.02	0.00	0.00	13.47	0.00	0.00	0.00	0.00	0.00	70.75	0.00	0.00	4746.99
28-Apr-24	128.04	0.00	0.00	10.99	0.00	0.00	0.00	0.00	0.00	75.60	1.53	0.00	4578.34
29-Apr-24	110.99	0.00	0.00	13.68	0.00	0.00	0.00	0.00	0.00	77.20	0.60	0.00	4718.13
30-Apr-24	124.27	0.00	0.00	11.71	0.00	0.00	0.00	0.00	0.00	85.25	0.00	1.78	4733.53
Total	4131.42	3.85	0.00	360.12	0.00	0.00	0.10	0.00	0.00	2628.56	2.45	2.38	135781.26

Source: NLDC

* As available on CEA Website. Gross Electricity Generation excluding electricity generation from renewables and captive power plants.

[#] Scheduled volume of all the bid areas.

Note: With change in the regime on implementation of GNA Regulations from 1st October 2023, the volume reported here is not strictly comparable to the volumes in previous months. Some discrepancies were identified by CERC in the data provided by NLDC which prompted further validation. The volume herein is computed after verification with the volumes reported by the Trading Licensees and the Power Exchanges, and are subject to further revision. The Commission has directed NLDC, vide letter dated 05.01.2024, to make necessary provisions to differentiate the type of transactions under GNA and T-GNA at the earliest. In the interim, the columns for daily volume of bilateral transactions have been omitted from this table.

Table-29(a): PRICE OF DAY AHEAD TRANSACTIONS OF ELECTRICITY (DAY-WISE) (₹/kWh), APRIL 2024

Market Segment	Day Ahead Market of IEX			Day Ahead Market of PXIL			Day Ahead Market of HPX		
Date	Minimum ACP	Maximum ACP	WA Price*	Minimum ACP	Maximum ACP	WA Price*	Minimum ACP	Maximum ACP	WA Price*
1-Apr-24	2.88	10.00	4.70	-	-	-	-	-	-
2-Apr-24	2.79	10.00	4.35	-	-	-	-	-	-
3-Apr-24	2.76	10.00	4.22	-	-	-	-	-	-
4-Apr-24	2.66	10.00	4.99	-	-	-	-	-	-
5-Apr-24	2.88	10.00	5.34	-	-	-	-	-	-
6-Apr-24	2.88	10.00	5.83	-	-	-	-	-	-
7-Apr-24	2.54	10.00	4.68	-	-	-	-	-	-
8-Apr-24	2.76	10.00	4.61	-	-	-	-	-	-
9-Apr-24	2.50	10.00	4.24	-	-	-	-	-	-
10-Apr-24	2.63	10.00	4.56	-	-	-	-	-	-
11-Apr-24	2.28	10.00	3.87	-	-	-	-	-	-
12-Apr-24	2.35	10.00	4.31	-	-	-	-	-	-
13-Apr-24	2.28	10.00	3.72	-	-	-	-	-	-
14-Apr-24	2.02	4.70	3.30	-	-	-	-	-	-
15-Apr-24	2.28	10.00	3.72	-	-	-	-	-	-
16-Apr-24	2.68	10.00	4.27	-	-	-	-	-	-
17-Apr-24	2.50	10.00	4.94	-	-	-	-	-	-
18-Apr-24	2.54	10.00	5.93	-	-	-	-	-	-
19-Apr-24	2.00	10.00	5.15	-	-	-	-	-	-
20-Apr-24	2.05	10.00	5.12	10.00	10.00	10.00	-	-	-
21-Apr-24	1.71	10.00	3.93	10.00	10.00	10.00	-	-	-
22-Apr-24	2.00	10.00	4.55	10.00	10.00	10.00	-	-	-
23-Apr-24	2.02	10.00	4.66	10.00	10.00	10.00	-	-	-
24-Apr-24	2.00	10.00	4.70	10.00	10.00	10.00	-	-	-
25-Apr-24	2.16	10.00	4.29	10.00	10.00	10.00	-	-	-
26-Apr-24	2.02	10.00	4.59	10.00	10.00	10.00	-	-	-
27-Apr-24	2.19	10.00	5.33	-	-	-	-	-	-
28-Apr-24	2.68	10.00	5.05	-	-	-	-	-	-
29-Apr-24	2.98	10.00	5.32	-	-	-	-	-	-
30-Apr-24	3.13	10.00	5.42	-	-	-	-	-	-
	1.71[#]	10.00[#]	4.63	10.00[#]	10.00[#]	10.00	-	-	-

Source: IEX, PXIL and HPX

* Weighted average price computed based on Area Clearing Volume (ACV) and Area Clearing Price (ACP) for each hour of the day. Here, ACV and ACP represent the scheduled volume and weighted average price of all the bid areas of power exchanges.

Maximum/Minimum in the month

**Table-29(b): PRICE OF GREEN DAY AHEAD TRANSACTIONS OF ELECTRICITY (DAY-WISE) (₹/kWh),
APRIL 2024**

Market Segment	Green Day Ahead Market of IEX			Green Day Ahead Market of PXIL			Green Day Ahead Market of HPX		
Date	Minimum ACP	Maximum ACP	Weighted Average Price*	Minimum ACP	Maximum ACP	Weighted Average Price*	Minimum ACP	Maximum ACP	Weighted Average Price*
1-Apr-24	3.62	6.64	4.33	-	-	-	-	-	-
2-Apr-24	3.05	10.00	4.37	-	-	-	-	-	-
3-Apr-24	3.00	10.00	4.07	-	-	-	-	-	-
4-Apr-24	2.85	10.00	3.93	-	-	-	-	-	-
5-Apr-24	2.96	10.00	4.48	-	-	-	-	-	-
6-Apr-24	3.00	10.00	4.54	-	-	-	-	-	-
7-Apr-24	2.71	10.00	4.31	-	-	-	-	-	-
8-Apr-24	2.90	10.00	4.48	-	-	-	-	-	-
9-Apr-24	2.80	10.00	4.17	-	-	-	-	-	-
10-Apr-24	2.56	10.00	3.87	-	-	-	-	-	-
11-Apr-24	2.69	10.00	4.06	-	-	-	-	-	-
12-Apr-24	2.42	8.50	3.76	-	-	-	-	-	-
13-Apr-24	2.52	10.00	3.98	-	-	-	-	-	-
14-Apr-24	2.42	6.00	3.75	-	-	-	-	-	-
15-Apr-24	2.50	6.00	3.92	-	-	-	-	-	-
16-Apr-24	2.36	6.00	3.68	-	-	-	-	-	-
17-Apr-24	2.74	10.00	4.24	-	-	-	-	-	-
18-Apr-24	2.52	10.00	4.94	-	-	-	-	-	-
19-Apr-24	2.68	10.00	4.57	-	-	-	-	-	-
20-Apr-24	2.00	10.00	4.20	-	-	-	-	-	-
21-Apr-24	1.90	10.00	3.84	-	-	-	-	-	-
22-Apr-24	1.71	10.00	3.59	-	-	-	-	-	-
23-Apr-24	2.00	10.00	3.65	-	-	-	-	-	-
24-Apr-24	2.72	10.00	3.95	-	-	-	-	-	-
25-Apr-24	2.20	10.00	3.76	-	-	-	-	-	-
26-Apr-24	2.30	10.00	3.68	-	-	-	-	-	-
27-Apr-24	2.30	10.00	3.66	-	-	-	-	-	-
28-Apr-24	2.20	10.00	3.77	-	-	-	-	-	-
29-Apr-24	2.75	10.00	4.32	-	-	-	-	-	-
30-Apr-24	3.00	10.00	5.11	-	-	-	-	-	-
	1.71#	10.00#	4.08	-	-	-	-	-	-

Source: IEX, PXIL and HPX

* Weighted average price computed based on Area Clearing Volume (ACV) and Area Clearing Price (ACP) for each hour of the day. Here, ACV and ACP represent the scheduled volume and weighted average price of all the bid areas of power exchanges.

Maximum/Minimum in the month

Table-29(c): PRICE OF REAL TIME TRANSACTIONS OF ELECTRICITY (DAY-WISE) (₹/kWh), APRIL 2024

Market Segment	Real Time Market of IEX			Real Time Market of PXIL			Real Time Market of HPX		
	Date	Minimum ACP	Maximum ACP	Weighted Average Price*	Minimum ACP	Maximum ACP	Weighted Average Price*	Minimum ACP	Maximum ACP
1-Apr-24	1.34	10.00	3.28	-	-	-	-	-	-
2-Apr-24	1.69	10.00	4.26	-	-	-	-	-	-
3-Apr-24	2.50	10.00	5.49	-	-	-	-	-	-
4-Apr-24	2.99	10.00	6.43	-	-	-	-	-	-
5-Apr-24	3.03	10.00	6.08	-	-	-	-	-	-
6-Apr-24	2.70	10.00	6.34	-	-	-	-	-	-
7-Apr-24	1.52	10.00	4.34	-	-	-	-	-	-
8-Apr-24	1.93	10.00	3.46	-	-	-	-	-	-
9-Apr-24	1.93	10.00	3.36	-	-	-	-	-	-
10-Apr-24	1.69	10.00	3.28	-	-	-	-	-	-
11-Apr-24	1.88	10.00	3.19	-	-	-	-	-	-
12-Apr-24	1.49	10.00	3.33	-	-	-	-	-	-
13-Apr-24	1.63	5.00	3.44	-	-	-	-	-	-
14-Apr-24	1.01	5.22	3.46	-	-	-	-	-	-
15-Apr-24	2.78	10.00	4.81	-	-	-	-	-	-
16-Apr-24	1.58	10.00	5.92	-	-	-	-	-	-
17-Apr-24	1.65	10.00	5.09	-	-	-	10.00	10.00	10.00
18-Apr-24	1.92	10.00	6.20	-	-	-	10.00	10.00	10.00
19-Apr-24	1.20	10.00	4.58	-	-	-	-	-	-
20-Apr-24	1.50	10.00	4.28	-	-	-	-	-	-
21-Apr-24	0.99	10.00	4.12	-	-	-	-	-	-
22-Apr-24	1.95	10.00	4.31	-	-	-	-	-	-
23-Apr-24	1.65	10.00	4.48	10.00	10.00	10.00	-	-	-
24-Apr-24	1.65	10.00	4.53	-	-	-	-	-	-
25-Apr-24	1.52	10.00	5.21	-	-	-	-	-	-
26-Apr-24	2.50	10.00	6.28	-	-	-	-	-	-
27-Apr-24	2.99	10.00	6.11	-	-	-	-	-	-
28-Apr-24	1.82	10.00	5.61	10.00	10.00	10.00	-	-	-
29-Apr-24	2.42	10.00	6.29	10.00	10.00	10.00	-	-	-
30-Apr-24	2.95	10.00	6.74	-	-	-	10.00	10.00	10.00
	0.99#	10.00#	4.78	10.00#	10.00#	10.00	10.00#	10.00#	10.00

Source: IEX, PXIL and HPX

* Weighted average price computed based on Area Clearing Volume (ACV) and Area Clearing Price (ACP) for each hour of the day. Here, ACV and ACP represent the scheduled volume and weighted average price of all the bid areas of power exchanges.

Maximum/Minimum in the month

Table-29(d): PRICE OF HIGH PRICE DAY AHEAD TRANSACTIONS OF ELECTRICITY (DAY-WISE) (₹/kWh), APRIL 2024									
Market Segment	High Price Day Ahead Market of IEX			High Price Day Ahead Market of PXIL			High Price Day Ahead Market of HPX		
Date	Minimum ACP	Maximum ACP	Weighted Average Price	Minimum ACP	Maximum ACP	Weighted Average Price	Minimum ACP	Maximum ACP	Weighted Average Price
1-Apr-24	-	-	-	-	-	-	-	-	-
2-Apr-24	-	-	-	-	-	-	-	-	-
3-Apr-24	-	-	-	-	-	-	-	-	-
4-Apr-24	-	-	-	-	-	-	-	-	-
5-Apr-24	-	-	-	-	-	-	-	-	-
6-Apr-24	-	-	-	-	-	-	-	-	-
7-Apr-24	-	-	-	-	-	-	-	-	-
8-Apr-24	-	-	-	-	-	-	-	-	-
9-Apr-24	-	-	-	-	-	-	-	-	-
10-Apr-24	-	-	-	-	-	-	-	-	-
11-Apr-24	-	-	-	-	-	-	-	-	-
12-Apr-24	-	-	-	-	-	-	-	-	-
13-Apr-24	-	-	-	-	-	-	-	-	-
14-Apr-24	-	-	-	-	-	-	-	-	-
15-Apr-24	-	-	-	-	-	-	-	-	-
16-Apr-24	-	-	-	-	-	-	-	-	-
17-Apr-24	-	-	-	-	-	-	-	-	-
18-Apr-24	-	-	-	-	-	-	-	-	-
19-Apr-24	-	-	-	-	-	-	-	-	-
20-Apr-24	-	-	-	-	-	-	-	-	-
21-Apr-24	-	-	-	-	-	-	-	-	-
22-Apr-24	-	-	-	-	-	-	-	-	-
23-Apr-24	1.55	6.45	3.38	-	-	-	-	-	-
24-Apr-24	-	-	-	-	-	-	-	-	-
25-Apr-24	-	-	-	-	-	-	-	-	-
26-Apr-24	-	-	-	-	-	-	-	-	-
27-Apr-24	-	-	-	-	-	-	-	-	-
28-Apr-24	-	-	-	-	-	-	-	-	-
29-Apr-24	15.00	15.00	15.00	-	-	-	-	-	-
30-Apr-24	-	-	-	-	-	-	-	-	-
	1.55[#]	15.00[#]	3.56	-	-	-	-	-	-

Source: IEX, PXIL and HPX

Maximum/Minimum in the month

**Table-30: VOLUME OF TRANSACTIONS THROUGH POWER EXCHANGES (REGIONAL ENTITY*-WISE) (MUs),
APRIL 2024**

Name of the Entity	Through DAM		Through GDAM		Through HP-DAM		Through RTM		Total Net***
	Sale	Purchase	Sale	Purchase	Sale	Purchase	Sale	Purchase	
PUNJAB	62.96	30.46	0.00	9.30	0.00	0.00	103.93	129.43	2.31
HARYANA	428.86	20.05	0.00	5.97	0.00	0.00	217.38	7.65	-612.58
RAJASTHAN	43.23	119.36	4.35	2.84	0.00	0.00	89.76	239.76	224.62
DELHI	197.12	4.67	0.28	23.72	0.00	0.00	72.55	37.49	-204.07
UTTAR PRADESH	859.59	227.03	16.11	19.59	0.00	0.00	264.69	168.14	-725.64
UTTARAKHAND	1.09	336.99	8.27	0.00	0.00	0.00	5.77	54.69	376.55
HIMACHAL P	116.67	154.29	20.52	0.00	0.00	0.00	43.08	110.27	84.28
J & K	3.02	115.03	0.91	0.00	0.00	0.00	18.27	154.95	247.78
CHANDIGARH	34.65	1.21	0.00	0.00	0.00	0.00	1.04	0.00	-34.49
MP	228.39	41.71	25.63	4.61	0.00	0.00	343.42	22.18	-528.96
MAHARASHTRA	78.30	283.56	8.02	78.03	0.00	0.00	72.36	245.47	448.38
GUJARAT	62.68	797.25	0.00	13.46	0.002	0.00	30.10	71.89	789.81
CHHATTISGARH	241.14	3.82	0.00	1.27	0.00	0.00	191.86	14.41	-413.50
GOA	30.34	14.42	0.00	0.00	0.00	0.00	3.88	6.08	-13.72
DD&DNH	0.00	36.40	0.00	0.62	0.00	0.00	0.69	29.21	65.53
ANDHRA PRADESH	36.68	123.59	26.98	4.67	0.00	0.00	55.80	133.20	142.01
KARNATAKA	0.17	180.13	1.17	10.70	0.00	0.00	1.18	112.36	300.66
KERALA	2.62	84.06	0.00	6.66	0.00	0.00	6.12	79.49	161.48
TAMIL NADU	13.03	177.79	0.00	56.86	0.00	0.00	11.00	141.64	352.25
PONDICHERRY	23.16	0.00	0.00	0.00	0.00	0.00	19.87	0.00	-43.03
TELANGANA	42.10	512.50	0.00	5.09	0.00	0.00	22.91	338.91	791.49
WEST BENGAL	48.98	212.70	3.73	0.00	0.00	0.10	75.94	112.92	197.08
ODISHA	25.03	116.20	0.00	5.84	0.00	0.00	74.61	119.47	141.86
BIHAR	4.20	60.37	0.00	0.00	0.00	0.00	178.97	70.16	-52.64
JHARKHAND	0.00	7.54	0.00	12.11	0.00	0.00	55.58	39.71	3.78
SIKKIM	3.27	12.87	0.00	0.00	0.00	0.00	8.84	0.83	1.58
DVC	28.81	1.28	0.00	42.01	0.00	0.00	32.11	23.96	6.33
ARUNACHAL P	0.10	0.32	0.00	0.00	0.00	0.00	8.69	7.49	-0.96
ASSAM	0.00	0.08	0.00	0.00	0.00	0.00	141.85	14.22	-127.56
MANIPUR	0.00	19.76	0.00	0.00	0.00	0.00	16.13	6.80	10.43
MEGHALAYA	2.30	36.90	0.00	0.00	0.00	0.00	1.40	7.93	41.13
MIZORAM	1.94	0.00	0.00	0.00	0.00	0.00	0.04	0.00	-1.98
NAGALAND	1.72	1.76	0.00	0.00	0.00	0.00	2.61	2.68	0.11
TRIPURA	0.00	1.35	0.00	0.00	0.00	0.00	0.99	24.96	25.32
NTPC STATIONS-NR	37.58	0.00	0.00	0.00	0.06	0.00	65.63	0.00	-103.27
NEP	0.00	18.64	0.00	0.00	0.00	0.00	0.00	0.06	18.70
AD HYDRO	24.82	0.00	0.00	0.00	0.00	0.00	0.99	0.00	-25.81
IGSTPS	2.62	0.00	0.00	0.00	0.00	0.00	10.42	0.00	-13.03
KARCHAM WANGTOO	23.58	0.00	0.00	0.00	0.00	0.00	1.46	0.00	-25.04
SHREE CEMENT	1.64	0.00	0.00	0.00	0.00	0.00	0.29	20.23	18.30
LANCO BUDHIL	1.17	0.00	0.00	0.00	0.00	0.00	0.49	0.00	-1.66
SORANG HEP	7.51	0.00	0.00	0.00	0.00	0.00	1.97	0.00	-9.48
SAINJ HEP	9.57	0.00	0.00	0.00	0.00	0.00	0.79	0.14	-10.21
ASEJTL SLR	40.87	0.00	23.96	0.00	0.00	0.00	2.68	0.00	-67.50
SINGOLI BHATWARI H	4.26	0.00	3.40	0.00	0.00	0.00	1.86	0.00	-9.53
NCR ALLAHABAD	0.00	16.34	0.00	20.80	0.00	0.00	0.00	4.39	41.53
RENEW SR SLR	36.36	0.00	7.48	0.00	0.00	0.00	4.96	0.00	-48.79
TPSL	0.52	0.00	39.51	0.00	0.00	0.00	0.61	0.00	-40.64
RAPP 7&8	0.00	0.00	0.00	0.00	0.00	0.00	2.47	0.00	-2.47
RISING SLR	0.00	0.00	0.00	0.00	0.00	0.00	0.52	0.00	-0.52
AMP GREEN6	20.98	0.00	0.00	0.00	0.00	0.00	4.14	0.00	-25.12
ONEVOLT	21.73	0.00	0.00	0.00	0.00	0.00	3.48	0.00	-25.21
GRIAN	12.67	0.00	12.91	0.00	0.00	0.00	0.17	0.00	-25.76
AMPLUS AGES	1.19	0.00	18.15	0.00	0.00	0.00	3.34	0.00	-22.67
RENEW SPRATAP	38.16	0.00	0.00	0.00	0.00	0.00	3.75	0.00	-41.90
RENEW ROSHNI FATE	12.80	0.00	14.85	0.00	0.00	0.00	12.18	0.00	-39.83
ADEPT	28.70	0.00	0.00	0.00	0.00	0.00	1.27	0.00	-29.96

TESPL	2.39	0.00	5.89	0.00	0.00	0.00	4.63	0.00	-12.91
ADANI S RJ2	32.73	0.00	5.65	0.00	0.00	0.00	0.68	0.00	-39.05
AYANA RP3	0.00	0.00	3.79	0.00	0.00	0.00	0.00	0.00	-3.79
NTPC STATIONS-WR	5.67	0.00	0.00	0.00	0.04	0.00	19.53	0.49	-24.75
JINDAL POWER	44.17	0.00	0.00	0.00	0.00	0.00	1.80	0.00	-45.97
ACBIL	38.03	0.00	0.00	0.00	0.00	0.00	6.39	0.28	-44.14
BALCO	0.12	0.00	0.00	7.44	0.00	0.00	14.41	2.54	-4.55
DCPP	71.34	0.00	0.00	0.00	0.00	0.00	0.83	0.00	-72.17
EMCO	0.30	0.00	0.00	0.00	0.00	0.00	2.50	0.00	-2.80
KSK MAHANADI	9.51	0.00	0.00	0.00	0.00	0.00	2.88	0.00	-12.39
ESSAR POWER	81.70	0.00	0.00	0.00	0.00	0.00	9.02	1.62	-89.11
JINDAL STAGE-II	107.44	0.00	0.00	0.00	0.00	0.00	7.67	0.00	-115.10
DB POWER	131.72	0.00	0.00	0.00	0.00	0.00	3.75	0.00	-135.47
DHARIWAL POWER	10.76	0.00	0.00	0.00	0.00	0.00	0.76	0.00	-11.51
JAYPEE NIGRIE	21.39	0.00	0.00	0.00	0.00	0.00	0.02	0.00	-21.40
DGEN MEGA POWER	18.35	0.00	0.00	0.00	0.00	0.00	13.98	0.00	-32.33
MB POWER	0.14	21.24	0.00	0.00	0.00	0.00	26.86	8.96	3.20
MARUTI COAL	3.57	0.00	0.00	0.00	0.00	0.00	0.12	0.00	-3.69
JHABUA POWER MP	0.73	0.55	0.00	0.00	0.00	0.00	7.82	0.03	-7.97
SASAN UMPP	0.00	0.00	0.00	0.00	0.00	0.00	12.91	0.00	-12.91
TRN ENERGY	27.00	0.00	0.00	0.00	0.00	0.00	14.15	0.00	-41.15
RKM POWER	28.57	0.00	0.00	0.00	0.00	0.00	13.94	0.00	-42.51
SKS POWER	13.37	3.57	0.00	0.00	0.00	0.00	2.76	7.69	-4.88
AMPS Hazira	0.00	31.42	0.00	28.55	0.00	0.00	0.00	13.82	73.79
RGPL IR	0.00	0.00	0.00	0.00	0.00	0.00	0.00	0.78	0.78
ADANI WIND	23.22	0.00	12.96	0.00	0.00	0.00	13.20	0.00	-49.39
CONTINNUM PT	0.97	0.00	3.94	0.00	0.00	0.00	0.00	0.00	-4.91
RENERGY5 WIND	6.33	0.00	3.66	0.00	0.00	0.00	0.03	0.00	-10.02
ARTPP	64.04	0.00	0.00	0.00	0.00	0.00	11.13	5.56	-69.61
MTPS	0.78	0.00	0.00	0.00	0.00	0.00	14.37	0.00	-15.15
RAIGARH ADANI	36.92	0.00	0.00	0.00	0.00	0.00	4.60	0.00	-41.52
NREL DAYAPAR (W)	0.00	0.00	0.00	0.00	0.00	0.00	8.47	0.00	-8.47
ADANI 4RE	81.81	0.00	37.53	0.00	0.00	0.00	7.217	0.00	-126.564
ADANI_W_KUTCHH4 (INFIRM)	11.47	0.00	7.84	0.00	0.00	0.00	0.000	0.00	-19.309
ADANI GREEN_25B (INFIRM)	24.22	0.00	25.25	0.00	0.00	0.00	2.981	0.00	-52.452
ADANI GREEN_26B (INFIRM)	4.95	0.00	3.14	0.00	0.00	0.00	0.235	0.00	-8.324
NANI VIRANI W	0.01	0.00	2.14	0.00	0.00	0.00	0.007	0.00	-2.161
ADANI GREEN_26A (INFIRM)	0.00	0.00	0.17	0.00	0.00	0.00	0.000	0.00	-0.174
ADANIRE 55 (INFIRM)	3.28	0.00	2.16	0.00	0.00	0.00	0.007	0.00	-5.445
ADANI GREEN_25A (INFIRM)	0.00	0.00	0.93	0.00	0.00	0.00	0.000	0.00	-0.926
NTPC STATIONS-SR	17.28	0.00	0.00	0.00	0.00	0.00	10.092	0.00	-27.368
LANKO KONDAPALLI	0.00	0.00	0.00	0.00	0.00	0.00	0.113	0.00	-0.113
SIMHAPURI	2.65	0.00	0.00	0.00	0.00	0.00	1.117	20.68	16.911
MEENAKSHI	0.00	0.00	0.00	0.00	0.00	0.00	2.21	0.00	-2.21
COASTGEN	0.00	0.00	0.00	0.00	0.00	0.00	0.001	0.00	-0.001
IL&FS	6.65	0.00	0.00	0.00	0.00	0.00	2.08	0.00	-8.73
NLC	0.22	0.00	0.00	0.00	0.00	0.00	6.53	0.00	-6.75
SEBFCORP	40.26	0.00	0.00	0.00	0.00	0.00	10.77	0.00	-51.03
NETCL VALLUR	0.32	0.00	0.00	0.00	0.00	0.00	1.37	0.00	-1.68
OSTRO Hiriyur	3.98	0.00	3.82	0.00	0.00	0.00	0.94	0.00	-8.74
JSW RENEW 2	0.00	0.00	4.12	0.00	0.00	0.00	0.00	0.00	-4.12
RENEW SOJAS	1.08	0.00	0.90	0.00	0.00	0.00	14.19	0.00	-16.17
NTPC STATIONS-ER	98.61	0.00	0.00	0.00	0.00	0.00	29.48	0.00	-128.08
MAITHON POWER LTE	0.07	0.00	0.00	0.00	0.00	0.00	0.00	0.00	-0.07
NPGC	3.62	0.00	0.00	0.00	0.00	0.00	2.97	0.00	-6.58
ADHUNIK POWER LTD	0.00	0.00	0.00	0.00	0.00	0.00	6.15	0.00	-6.15
CHUZACHEN HEP	0.00	0.00	0.00	0.00	0.00	0.00	0.09	0.00	-0.09

GMR KAMALANGA	1.84	0.00	0.00	0.00	0.00	0.00	0.20	0.00	-2.04
JITPL	79.93	0.00	0.00	0.00	0.00	0.00	0.00	0.00	-79.93
NEPAL(NVVN)	0.00	186.70	0.00	0.00	0.00	0.00	0.18	0.36	186.88
BRBCL, NABINAGAR	4.30	0.00	0.00	0.00	0.00	0.00	1.09	0.00	-5.38
DGPCL Bhutan	0.00	121.38	0.00	0.00	0.00	0.00	0.00	17.41	138.79
KBUNL	1.56	0.00	0.00	0.00	0.00	0.00	0.00	0.00	-1.56
BASOCHHU HEP	0.00	0.00	0.00	0.00	0.00	0.00	0.24	0.00	-0.24
IBEUL	14.82	0.00	0.00	0.00	0.00	0.00	0.000	0.00	-14.823
NTPC STATIONS-NER	2.23	0.00	0.00	0.00	0.00	0.00	2.03	0.00	-4.26
NEEPCO STATIONS	0.02	0.00	0.00	0.00	0.00	0.00	13.80	0.00	-13.82
ONGC PALATANA	0.00	0.00	0.00	0.00	0.00	0.00	1.212	0.00	-1.212

Source: NLDC

* in case of a state, the entities which are "selling" also include generators connected to state grid and the entities which are "buying" also include open access consumers.

** (-) indicates sale and (+) indicates purchase,

*** Total net includes net of transactions through various segments on power exchanges

Table-31: VOLUME AND CHARGES UNDER DSM (DAY-WISE), APRIL 2024				
Date	Volume (MU)	All India Grid Charges (₹/kWh)		
		Minimum	Maximum	Average
1-Apr-24	93.64	2.00	10.00	5.18
2-Apr-24	79.44	2.00	10.00	4.87
3-Apr-24	75.47	2.50	10.00	5.62
4-Apr-24	71.96	2.91	10.00	6.65
5-Apr-24	88.08	3.03	10.00	6.53
6-Apr-24	73.40	2.70	10.00	6.87
7-Apr-24	81.57	2.54	10.00	5.17
8-Apr-24	76.76	2.54	10.00	5.06
9-Apr-24	81.81	2.50	10.00	4.63
10-Apr-24	81.42	2.57	10.00	5.00
11-Apr-24	82.90	2.28	10.00	4.30
12-Apr-24	86.89	2.35	10.00	4.66
13-Apr-24	88.09	2.28	10.00	4.21
14-Apr-24	90.83	2.02	10.00	3.73
15-Apr-24	88.27	2.20	10.00	4.83
16-Apr-24	79.49	2.03	10.00	5.91
17-Apr-24	88.94	2.03	10.00	5.59
18-Apr-24	93.41	2.03	10.00	6.93
19-Apr-24	88.03	2.00	10.00	6.06
20-Apr-24	83.99	2.02	10.00	5.71
21-Apr-24	81.24	1.71	10.00	4.49
22-Apr-24	81.22	1.71	10.00	5.13
23-Apr-24	76.44	1.71	10.00	5.31
24-Apr-24	76.07	1.72	10.00	5.31
25-Apr-24	78.02	1.72	10.00	5.46
26-Apr-24	81.81	1.71	10.00	6.51
27-Apr-24	80.65	1.71	10.00	6.64
28-Apr-24	80.66	1.82	10.00	6.41
29-Apr-24	83.65	1.84	10.01	6.61
30-Apr-24	82.17	2.85	10.00	7.02
Total	2476.34	1.71[#]	10.01[#]	5.55
<i>Source: NLDC</i>				
<i># Maximum/Minimum in the month</i>				

Table-32: VOLUME OF ELECTRICITY UNDER DRAWAL/ OVER INJECTION (EXPORTED) UNDER DSM, APRIL 2024		
Name of the Entity	Volume of Under drawal/ Over injection (MUs)	% of Volume
TAMIL NADU	140.91	5.56
MAHARASHTRA	101.07	3.98
UTTAR PRADESH	100.80	3.97
NTPC STATIONS-WR	99.86	3.94
MP	92.74	3.66
RAJASTHAN	90.17	3.56
GUJARAT	89.76	3.54
PUNJAB	85.81	3.38
NTPC STATIONS-NR	83.61	3.30
NTPC STATIONS-SR	65.31	2.58
CHHATTISGARH	62.89	2.48
HARYANA	62.47	2.46
KARNATAKA	57.93	2.28
TELANGANA	57.07	2.25
ANDHRA PRADESH	49.38	1.95
NEPAL(NVVN)	46.62	1.84
NTPC STATIONS-ER	44.61	1.76
BIHAR	43.29	1.71
NHPC STATIONS	37.62	1.48
JHARKHAND	36.79	1.45
BEEMPOW	35.78	1.41
J & K	31.33	1.24
SASAN UMPP	30.18	1.19
UTTARAKHAND	29.16	1.15
DVC	28.17	1.11
ODISHA	28.05	1.11
DELHI	25.06	0.99
ADANI 4RE	23.00	0.91
NEEPCO STATIONS	21.75	0.86
NLC	20.86	0.82
AH4 WIND	18.21	0.72
AMPS Hazira	16.98	0.67
RKM POWER	15.71	0.62
IGSTPS	15.09	0.59
AHEJ4L SOLAR	12.83	0.51
JINDAL STAGE-II	12.79	0.50
MANIPUR	12.67	0.50
HIMACHAL PRADESH	11.88	0.47
BBMB	11.52	0.45
AZURE43 SLR	10.67	0.42
WEST BENGAL	10.60	0.42
GIWEL BHUJ	10.52	0.41
ASSAM	10.20	0.40
SBESS	10.20	0.40
AGEMPL BHUJ	9.94	0.39
AHEJ2L SOLAR	9.62	0.38
NEP	9.26	0.36
RAIL	9.21	0.36
KAPP 3&4	9.14	0.36
AVAADASN SLR	9.03	0.36
ADANI WIND	8.67	0.34
MEGHALAYA	8.47	0.33
OSTRO	8.20	0.32
ADANIHB WIND	7.94	0.31
AVAADA SUNSHINE	7.84	0.31
SALAL HEP	7.76	0.31
ASEJTL SLR	7.70	0.30
GOA	7.37	0.29
JAYPEE NIGRIE	7.28	0.29
JINDAL POWER	7.11	0.28

AYANA NPKUNTA	7.10	0.28
MAITHON POWER LTD	6.91	0.27
NPGC	6.89	0.27
PONDICHERRY	6.68	0.26
RENEW SOJAS	6.67	0.26
AVADARJHN SLR	6.57	0.26
RENEW BHUJ	6.50	0.26
BRBCL,NABINAGAR	6.13	0.24
LANKO AMK	6.11	0.24
NJPC	5.86	0.23
BALCO	5.83	0.23
SKRPL	5.75	0.23
THARI SLR	5.72	0.23
KERALA	5.57	0.22
CLEAN SLR	5.56	0.22
ARS PVGD	5.51	0.22
ALTRA XERGI	5.48	0.22
AZURE MAPLE SLR	5.34	0.21
NOKHRA STPP	5.33	0.21
RENEW SR SLR	5.32	0.21
ALFANAR BHUJ	5.29	0.21
AHEJ3L SOLAR	5.27	0.21
CHANDIGARH	5.23	0.21
RENEW BHACHAU	5.12	0.20
RPREL	5.07	0.20
PARAM PVGD	4.99	0.20
ESSAR POWER	4.93	0.19
MIZORAM	4.85	0.19
DD&DNH	4.83	0.19
RENEW ROSHNI	4.82	0.19
SBG NPK	4.66	0.18
AHEJOL SLR	4.63	0.18
ARINSUM RUMS	4.58	0.18
NSPCL	4.57	0.18
EDEN SLR	4.53	0.18
SPRNG NPKUNTA	4.49	0.18
AH3 WIND	4.49	0.18
APRAAVA	4.48	0.18
KREDL PVGD	4.43	0.17
AZURE PVGD	4.28	0.17
GIWEL TCN	4.26	0.17
MAHINDRA RUMS	4.26	0.17
RENEWSB	4.18	0.16
ABC BHDL2	4.18	0.16
RENEWJH SLR	4.14	0.16
NAGALAND	4.05	0.16
RENEWSW SLR	4.05	0.16
AH2 WIND	4.03	0.16
ACME SLR	3.94	0.16
TATA PVGD	3.86	0.15
RENEWURJA SLR	3.84	0.15
MSRPL	3.81	0.15
GRT JPL	3.76	0.15
CLEANSR SLR	3.70	0.15
AZURE41 SLR	3.68	0.15
RISING SLR	3.67	0.14
RENEW SLR BKN	3.66	0.14
ACME HEERGARH	3.57	0.14
AVIKIRAN	3.56	0.14
SIKKIM	3.55	0.14
ARUNACHAL PRADESH	3.51	0.14
NETCL VALLUR	3.51	0.14
NEA-Bihar	3.40	0.13
NTPC ANTP	3.37	0.13

ORANGE TCN	3.30	0.13
NTPC STATIONS-NER	3.29	0.13
KARCHAM WANGTOO	3.28	0.13
INOX BHUJ	3.27	0.13
MSUPL_BHDL2	3.23	0.13
RENEW SAAYAN	3.20	0.13
DGPCL Bhutan	3.19	0.13
TATA SLR	3.16	0.12
ACME RUMS	3.14	0.12
RAP C	3.10	0.12
BARC	3.09	0.12
BANGLADESH	2.99	0.12
ADANI S RJ2	2.98	0.12
SESPL	2.97	0.12
KOTESHWAR	2.95	0.12
MSEPL	2.95	0.12
RAMPUR HEP	2.94	0.12
OSTRO Hiriyur	2.94	0.12
THERMAL POWERTECH	2.91	0.11
FORTUM1 PVGD	2.82	0.11
SKS POWER	2.77	0.11
MTPS II	2.75	0.11
AYANA RP1	2.73	0.11
TEHRI	2.67	0.11
CGPL	2.62	0.10
ADY1 PVGD	2.60	0.10
ARERJL SLR	2.58	0.10
RENEW SPRATAP	2.53	0.10
DB POWER	2.50	0.10
TESPL	2.48	0.10
AHEJOL S FTG2	2.45	0.10
TATA GREEN	2.44	0.10
NAPP	2.41	0.09
NTPL	2.39	0.09
DEVKOOT SLR	2.38	0.09
SEMBCORP	2.38	0.09
ESPL RADHANESDA	2.17	0.09
AVAADA1 PVGD	2.16	0.09
ONGC PALATANA	2.16	0.09
SIMHAPURI	2.15	0.08
ADEPT	2.14	0.08
TRIPURA	2.13	0.08
JITPL	2.09	0.08
FRV ANTP	2.00	0.08
NETRA WIND	1.99	0.08
AZURE34 SLR	1.94	0.08
JSW RENEW 2	1.88	0.07
RENEW ROSHNI FATEHGARH	1.85	0.07
AZURE SLR	1.84	0.07
MB POWER	1.79	0.07
SPRING PUGALUR	1.76	0.07
GSECL P-II	1.71	0.07
SBG PVGD	1.70	0.07
TORRENT SOLARGEN	1.65	0.06
FORTUM2 PVGD	1.64	0.06
AMP GREEN6	1.59	0.06
RENEW PVGD	1.56	0.06
JHABUA POWER MP	1.54	0.06
DGEN MEGA POWER	1.49	0.06
KSK MAHANADI	1.46	0.06
GSECL Radhanesda	1.44	0.06
AZURE ANTP	1.43	0.06
AMPLUS AGES	1.40	0.06
SJVN GREEN	1.38	0.05

IL&FS	1.34	0.05
RAP B	1.30	0.05
SERENTICA RE4	1.30	0.05
ACBIL	1.27	0.05
RGPPL	1.25	0.05
RENEW SVIHAAN	1.21	0.05
RANGANADI HEP	1.18	0.05
POWERICA	1.17	0.05
GIPCL RADHANESDA	1.16	0.05
TPSL	1.10	0.04
Railways_ER ISTS	1.08	0.04
DCPP	0.94	0.04
TATA ANTP	0.90	0.04
GRIAN	0.90	0.04
ONEVOLT	0.89	0.04
RENEW SLR	0.89	0.04
GMR KAMALANGA	0.88	0.03
EMCO	0.87	0.03
TPREL RADHANESDA	0.86	0.03
YARROW PVGD	0.84	0.03
TRN ENERGY	0.81	0.03
IBEUL	0.78	0.03
AKS PVGD	0.75	0.03
ADHUNIK POWER LTD	0.75	0.03
AHSP ANTP	0.73	0.03
BETAM TCN	0.73	0.03
TASHIDENG HEP	0.71	0.03
SAINJ HEP	0.71	0.03
ADANI SLR 4	0.70	0.03
ABSP ANTP	0.68	0.03
AVAADA2 PVGD	0.66	0.03
CHUZACHEN HEP	0.63	0.02
JORETHANG	0.62	0.02
RANGIT HEP	0.61	0.02
SRSSFPL	0.56	0.02
PARE HEP	0.54	0.02
LOKTAK	0.54	0.02
TPSL BANDERWALA	0.52	0.02
LANCO BUDHIL	0.51	0.02
SINGOLI BHATWARI HEP	0.47	0.02
DAGACHU	0.45	0.02
POWERGRID HVDC	0.43	0.02
AGEL PSS 3	0.42	0.02
SORANG HEP	0.41	0.02
COASTGEN	0.40	0.02
MYTRAH TCN	0.40	0.02
AD HYDRO	0.39	0.02
AKSP ANTP	0.35	0.01
RSTPS FSPP	0.34	0.01
SHREE CEMENT	0.34	0.01
DOYANG HEP	0.32	0.01
FRV NPK	0.29	0.01
RONGNICHU HEP	0.28	0.01
MEENAKSHI	0.11	0.004
DHARIWAL POWER	0.10	0.004
NFF	0.08	0.003
SB SLR	0.06	0.003
HVDC ALPD	0.04	0.002
LANCO KONDAPALLI	0.03	0.001
HVDC PUS	0.01	0.0003
KHURJA STPP	0.001	0.00004
Total	2536.36	100.00
Volume Exported by top 5 Regional Entities	535.38	21.11

Table-33: VOLUME OF ELECTRICITY OVER DRAWAL/ UNDER INJECTION (IMPORTED) UNDER DSM, APRIL 2024		
Name of the Entity	Volume of Over drawal/ Under Injection (MUs)	% of Volume
NTPC STATIONS-NR	141.07	5.84
NTPC STATIONS-ER	116.61	4.83
UTTAR PRADESH	115.47	4.78
NTPC STATIONS-WR	111.89	4.63
NTPC STATIONS-SR	103.89	4.30
RAJASTHAN	69.43	2.87
KARNATAKA	68.21	2.82
WEST BENGAL	60.86	2.52
MAHARASHTRA	57.41	2.38
BIHAR	52.93	2.19
GUJARAT	43.16	1.79
ODISHA	41.05	1.70
TELANGANA	39.62	1.64
HARYANA	38.75	1.60
KERALA	37.76	1.56
ANDHRA PRADESH	35.46	1.47
J & K	32.65	1.35
MP	32.65	1.35
PUNJAB	31.66	1.31
CHHATTISGARH	27.34	1.13
AGEMPL BHUJ	24.09	1.00
AMPS Hazira	23.92	0.99
TAMIL NADU	23.48	0.97
GIWEL BHUJ	23.03	0.95
ADANI 4RE	22.43	0.93
JHARKHAND	22.21	0.92
AYANA NPKUNTA	20.98	0.87
AH4 WIND	19.60	0.81
NLC	19.46	0.81
DVC	18.98	0.79
ASSAM	18.96	0.78
UTTARAKHAND	18.06	0.75
PARAM PVGD	17.56	0.73
SBESS	17.45	0.72
TRIPURA	17.27	0.71
HIMACHAL PRADESH	16.65	0.69
IGSTPS	15.57	0.64
RENEW ROSHNI	15.57	0.64
CGPL	15.36	0.64
AHEJ4L SOLAR	15.13	0.63
GRT JPL	14.46	0.60
MB POWER	14.25	0.59
KREDL PVGD	14.21	0.59
RENEW BHACHAU	13.81	0.57
FORTUMI PVGD	13.59	0.56
OSTRO	13.33	0.55
NPGC	13.32	0.55
RENEW BHUJ	13.30	0.55
IBEUL	12.92	0.53
AHEJ2L SOLAR	12.75	0.53
DELHI	12.48	0.52
OSTRO Hiriyur	11.84	0.49
ALFANAR BHUJ	11.58	0.48
ADANI WIND	11.55	0.48
GOA	11.52	0.48
SPRING PUGALUR	11.04	0.46
AVAADASN SLR	10.88	0.45
SKRPL	10.74	0.44
NHPC STATIONS	10.30	0.43
NETCL VALLUR	10.25	0.42
KAPP 3&4	10.04	0.42
BRBCL,NABINAGAR	9.72	0.40
DGPCL Bhutan	9.63	0.40
AVADARJHN SLR	9.34	0.39
ADANIHB WIND	8.44	0.35
NTPL	8.39	0.35

APRAAVA	7.68	0.32
SHREE CEMENT	7.63	0.32
AZURE43 SLR	7.55	0.31
ARUNACHAL PRADESH	7.16	0.30
RENEW ROSHNI FATEHGARH	7.14	0.30
AVIKIRAN	6.85	0.28
BALCO	6.75	0.28
NETRA WIND	6.74	0.28
AYANA RP1	6.71	0.28
DD&DNH	6.25	0.26
AHEJOL S FTG2	6.23	0.26
ASEJTL SLR	6.06	0.25
ALTRA XERGI	5.98	0.25
AH3 WIND	5.97	0.25
AH2 WIND	5.97	0.25
RENEWURJA SLR	5.89	0.24
AHEJ3L SOLAR	5.77	0.24
THERMAL POWERTECH	5.74	0.24
NTPC STATIONS-NER	5.70	0.24
AHEJOL SLR	5.67	0.23
INOX BHUJ	5.63	0.23
TORRENT SOLARGEN	5.61	0.23
JINDAL STAGE-II	5.51	0.23
JHABUA POWER MP	5.48	0.23
RENEW SR SLR	5.45	0.23
ACME SLR	5.40	0.22
SESPL	5.37	0.22
CHANDIGARH	5.33	0.22
JSW RENEW 2	5.19	0.21
RENEW SAAYAN	5.16	0.21
RAP C	5.08	0.21
NEPAL(NVVN)	5.06	0.21
TATA SLR	4.99	0.21
RENEWSB	4.83	0.20
RAP B	4.77	0.20
AZURE41 SLR	4.58	0.19
ABC BHDL2	4.57	0.19
TESPL	4.55	0.19
BANGLADESH	4.45	0.18
CLEAN SLR	4.42	0.18
DEVKOOT SLR	4.41	0.18
ADANI S RJ2	4.33	0.18
RENEWSW SLR	4.27	0.18
RENEWJH SLR	4.23	0.17
RENEW SLR BKN	4.22	0.17
RENEW SPRATAP	4.16	0.17
MSUPL BHDL2	4.16	0.17
EDEN SLR	4.09	0.17
THARI SLR	4.09	0.17
MSEPL	4.03	0.17
NOKHRA STPP	4.02	0.17
SIKKIM	3.94	0.16
RENEW SOJAS	3.90	0.16
KHURJA STPP	3.87	0.16
ADEPT	3.81	0.16
SIMHAPURI	3.69	0.15
ARERJL SLR	3.63	0.15
GRIAN	3.60	0.15
COASTGEN	3.59	0.15
ACME HEERGARH	3.53	0.15
AZURE MAPLE SLR	3.51	0.15
SERENTICA RE4	3.48	0.14
MTPS II	3.45	0.14
NTPC ANTP	3.41	0.14
TATA GREEN	3.40	0.14
CLEANSR SLR	3.35	0.14
MSRPL	3.11	0.13
ACME RUMS	3.10	0.13
RISING SLR	3.08	0.13
SASAN UMPP	2.95	0.12

ONEVOLT	2.93	0.12
AVAADA SUNSHINE	2.91	0.12
JAYPEE NIGRIE	2.88	0.12
ADHUNIK POWER LTD	2.85	0.12
AZURE SLR	2.76	0.11
RAPP 7&8	2.75	0.11
RPREL	2.74	0.11
SEMBCORP	2.70	0.11
AMPLUS AGES	2.69	0.11
MAHINDRA RUMS	2.55	0.11
JITPL	2.49	0.10
MAITHON POWER LTD	2.46	0.10
AMP GREEN6	2.45	0.10
DGEN MEGA POWER	2.45	0.10
RAIL	2.40	0.10
DB POWER	2.38	0.10
NAPP	2.36	0.10
NEEPCO STATIONS	2.23	0.09
TATA PVGD	2.23	0.09
ESSAR POWER	2.21	0.09
FRV ANTP	2.13	0.09
ESPL RADHANESDA	2.12	0.09
ARINSUM RUMS	2.09	0.09
MEENAKSHI	2.07	0.09
ARS PVGD	2.04	0.08
NSPCL	1.93	0.08
POWERICA	1.90	0.08
RGPPL	1.84	0.08
TPSL	1.78	0.07
SBG PVGD	1.76	0.07
PONDICHERRY	1.71	0.07
LANKO KONDAPALLI	1.71	0.07
AZURE34 SLR	1.66	0.07
ACBIL	1.60	0.07
KARCHAM WANGTOO	1.57	0.06
RENEW SVIHAAN	1.53	0.06
TEHRI	1.51	0.06
RANGANADI HEP	1.43	0.06
MEGHALAYA	1.42	0.06
Railways ER ISTS	1.20	0.05
GMR KAMALANGA	1.19	0.05
ONGC PALATANA	1.17	0.05
TPREL RADHANESDA	1.09	0.05
RKM POWER	1.09	0.04
KOTESHWAR	1.05	0.04
ADYI PVGD	1.04	0.04
NEP	1.02	0.04
KSK MAHANADI	1.01	0.04
MIZORAM	1.01	0.04
BBMB	0.98	0.04
DHARIWAL POWER	0.98	0.04
GIWEL TCN	0.98	0.04
AZURE PVGD	0.97	0.04
EMCO	0.97	0.04
AVAADAI PVGD	0.94	0.04
SJVN GREEN	0.93	0.04
RENEW PVGD	0.92	0.04
GIPCL RADHANESDA	0.92	0.04
RENEW SLR	0.91	0.04
TPSL BANDERWALA	0.91	0.04
NJPC	0.88	0.04
SRSSFPL	0.85	0.04
NAGALAND	0.84	0.03
AGEL PSS 3	0.82	0.03
SPRNG NPKUNTA	0.81	0.03
ADANI SLR 4	0.81	0.03
SBG NPK	0.75	0.03
ORANGE TCN	0.74	0.03
SALAL HEP	0.71	0.03
JINDAL POWER	0.61	0.03

AZURE ANTP	0.60	0.02
RSTPS FSPP	0.59	0.02
GSECL Radhanesda	0.58	0.02
SKS POWER	0.57	0.02
LANKO AMK	0.55	0.02
GSECL P-II	0.55	0.02
MYTRAH TCN	0.53	0.02
FORTUM2 PVGD	0.46	0.02
SAINJ HEP	0.42	0.02
TRN ENERGY	0.41	0.02
TATA ANTP	0.40	0.02
FRV NPK	0.37	0.02
SB SLR	0.35	0.01
AKS PVGD	0.29	0.01
AKSP ANTP	0.29	0.01
RANGIT HEP	0.28	0.01
AVAADA2 PVGD	0.28	0.01
ABSP ANTP	0.27	0.01
MANIPUR	0.25	0.01
RAMPUR HEP	0.24	0.01
TASHIDENG HEP	0.24	0.01
CHUZACHEN HEP	0.24	0.01
YARROW PVGD	0.23	0.01
IL&FS	0.22	0.01
RONGNICHU HEP	0.21	0.01
AHSP ANTP	0.21	0.01
PARE HEP	0.21	0.01
AD HYDRO	0.20	0.01
SINGOLI BHATWARI HEP	0.19	0.01
DOYANG HEP	0.19	0.01
NEA-Bihar	0.17	0.01
LOKTAK	0.14	0.01
BEEMPOW	0.12	0.005
BETAM TCN	0.10	0.004
LANCO BUDHIL	0.10	0.004
DAGACHU	0.09	0.004
JORETHANG	0.08	0.003
HVDC PUS	0.06	0.002
DCPP	0.06	0.002
POWERGRID HVDC	0.05	0.002
SORANG HEP	0.03	0.001
HVDC ALPD	0.02	0.001
TOTAL	2416.31	100.00
Volume Imported by top 5 Regional Entities	588.93	24.37

Table-34: VOLUME AND PRICE OF RENEWABLE ENERGY CERTIFICATES (RECs) TRANSACTED THROUGH POWER EXCHANGES AND THROUGH TRADERS (BILATERAL), APRIL 2024

Sr. No	Details of REC Transactions	Through Power Exchange			Bilateral through Traders
		IEX	PXIL	HPX	
1	Volume of Buy Bid	620890	434193	35000	-
2	Volume of Sell Bid	17180627	12426821	3500168	-
3	Ratio of Buy Bid to Sell Bid Volume	0.04	0.03	0.01	-
4	Traded Volume (MWh)	618390	426693	35000	102758
5	Weighted Average Price (₹/MWh)	232.08	208.61	225.71	297.71

Source: Power Exchanges & Grid-India REC Report

Note: 1 REC = 1 MWh

Under the CERC REC Regulations 2022, the categorization of RECs has been dispensed with and exchange of RECs through trading licensees has also been allowed

Table-35(a): VOLUME AND PRICE OF CROSS BORDER TRADE THROUGH DAY AHEAD MARKET AT IEX, APRIL 2024

Sr. No.	Neighbouring Country	Volume (MU)			Weighted Average Price (₹/kWh)	
		Sale	Purchase	Net*	Sale	Purchase
1	Nepal	0.00	205.33	205.33	-	3.49
2	Bhutan	0.00	121.38	121.38	-	3.37
	Total	0.00	326.72	326.72	-	-

Source: IEX

* Net indicates difference of volume purchased and sold by the respective neighbouring country

Note: No Cross Border transactions were recorded in DAM at PXIL and HPX

Table-35(b): VOLUME AND PRICE OF CROSS BORDER TRADE THROUGH REAL TIME MARKET AT IEX, APRIL 2024

Sr. No.	Neighbouring Country	Volume (MU)			Weighted Average Price (₹/kWh)	
		Sale	Purchase	Net*	Sale	Purchase
1	Nepal	0.18	0.42	0.24	2.41	3.58
2	Bhutan	0.00	17.41	17.41	-	3.66
	Total	0.18	17.83	17.65	-	-

Source: IEX

* Net indicates difference of volume purchased and sold by the respective neighbouring country

Note: No Cross Border transactions were recorded in RTM at PXIL and HPX



Economics Division
Central Electricity Regulatory Commission
6th, 7th & 8th Floors, Tower B, World Trade Centre,
Nauroji Nagar, New Delhi- 110029